

New and interesting Portuguese Lepidoptera records from 2015 (Insecta: Lepidoptera)

M. F. V. Corley, J. Rosete, A. R. Gonçalves, J. Nunes, P. Pires & E. Marabuto

Abstract

39 species are added to the Portuguese Lepidoptera fauna and one species deleted, mainly as a result of fieldwork undertaken by the authors and others in 2015. In addition, second and third records for the country, new province records and new food-plant data for a number of species are included. A summary of recent papers affecting the Portuguese fauna is included.

KEY WORDS: Insecta, Lepidoptera, distribution, Portugal.

Novos e interessantes registos portugueses de Lepidoptera em 2015 (Insecta: Lepidoptera)

Resumo

Como resultado do trabalho de campo desenvolvido pelos autores e outros, principalmente no ano de 2015, são adicionadas 39 espécies de Lepidoptera à fauna de Portugal e uma é retirada. Adicionalmente, são apresentados segundos e terceiros registos de espécies para o país, bem como novas plantas alimentícias para algumas espécies. Amplia-se ainda a distribuição geográfica de várias espécies, indicando-se novas regiões de ocorrência. Finalmente, é apresentado um sumário dos mais recentes trabalhos relevantes para a fauna portuguesa.

PALAVRAS CHAVE: Insecta, Lepidoptera, distribuição, Portugal.

Nuevas e interesantes citas portuguesas de Lepidoptera en 2015 (Insecta: Lepidoptera)

Resumen

Como resultado del trabajo de campo efectuado por los autores y otros, principalmente durante el año de 2015, se añaden 39 especies de Lepidoptera a la fauna de Portugal y se elimina una especie. Adicionalmente, se presentan segundos y terceros registros de especies para el país y también nuevas plantas nutricias para algunas especies. Se amplía la distribución geográfica de varias especies, indicando su presencia en nuevas provincias. Finalmente, se presenta un resumen de los trabajos más recientes que son relevantes para la fauna portuguesa.

PALABRAS CLAVE: Insecta, Lepidoptera, distribución, Portugal.

Introduction

This paper is the tenth in the series of annual summaries of new knowledge of Portuguese

Lepidoptera. It gives records of species of Lepidoptera added to the Portuguese fauna in 2015, together with new province records not included in the checklist (CORLEY, 2015b). Additional data includes new data on larval food-plants within the country and second and third records of species for the country, which are only indicated when they are not in new provinces. Papers and books mainly published in 2015 that relate to the Portuguese Lepidoptera fauna are listed and briefly summarised. Finally, an Appendix lists the new species for Portugal separately, with numbers indicating their correct position in the checklist; new genera for Portugal have author and year of publication given.

Following the publication of the new checklist (CORLEY, 2015b) there are some changes to the format used for these papers in recent years, e.g. CORLEY *et al.* (2008).

39 species new for Portugal are listed below, of which four are new for the Iberian Peninsula. Five of the species, marked (*) have been previously listed for Portugal, but the records were rejected in CORLEY (2015b), as being erroneous or unsubstantiated. One species is deleted from the Portuguese fauna.

In CORLEY (2015b) the number of Lepidoptera species recognised from Portugal was 2588. With the current paper and other papers mentioned herein, this total has risen to 2626.

Material and Methods

Most species were captured at mercury vapour light over or beside a white sheet. For specimens not taken at light, the means of capture is given. Specimens are retained in the collections of the original recorders, unless otherwise stated. However, a few records are based only on photographic evidence.

The order and nomenclature of families and species has been revised in accordance with the new Portuguese list (CORLEY, 2015b). The nomenclature of plant names follows CASTROVIEJO (1986-2015) where possible and otherwise follows TUTIN *et al.* (1964-1980).

The entry for species new for Portugal concludes with a summary of the known European distribution, and available information on the larval food-plant, given in square brackets if the information comes from outside Portugal.

Localities with UTM squares and altitude: (Municipalities in brackets)

The map below shows the 10 x 10 km UTM grid squares from which records cited in this paper were made.

Localities

Albergaria, Serra do Gerês (Terras de Bouro)	NG7127	700 m
Alcoutim, 1 km S. of,	PB3447	50 m
Alfanzina, Cabo Carvoeiro (Lagoa)	NB4905	40 m
Alfarelos (Soure)	NE2944	30 m
Algozo (Mogadouro)	QF0092	330 m
Almagreira, Rio Arunca (Pombal)	NE3026	81 m
Ansião, 2 km E. of,	NE5019	250 m
Árvore (Vila do Conde)	NF2275	10 m
Balsamão (Macedo de Cavaleiros)	PF7993	430 m
Barragem de Paradelas (Montalegre)	NG8725	730 m
Batocas, 1 km S. of, (Sabugal)	PE8282	825 m
Benfeita, Mata da Margarça (Arganil)	NE9053	420 m
Brotas (Moura)	ND7301	140 m
Buracas de Casmilo (Penela)	NE4333	300 m
Cabecico da Vinha, Freixiosa (Miranda do Douro)	QF2489	600 m
Cainheiras, Castro Laboreiro (Melgaço)	NG7152	970 m

Carrapateira (Vila do Bispo)	NB0806	25 m
Carrazedo, 2 km N. of, (Bragança)	PG7528	750 m
Cerejais (Alfândega da Fé)	PF7373	475 m
Chão de Couce (Ansião)	NE5218	270 m
Coimbra	NE4752	20 m
Condeixa-a-Nova	NE4438	100 m
Corte do Gago (Castro Marim)	PB2828	180 m
Cova da Lua (Bragança)	PG8039	790 m
Cruzes, W. of Rebordãos (Bragança)	PG7824	1080 m
Dorna (Melgaço)	NG6949	830 m
Escampado de São Miguel (Ansião)	NE4617	250 m
Escarigo (Figueira de Castelo Rodrigo)	PF8323	590 m
Fonte do Cuco, Penha Garcia (Idanha-a-Nova)	PE7035	575 m
Fonte Fria, Mata do Buçaco (Mealhada)	NE5370	270 m
França, 5 km west of, (Bragança)	PG8241	750 m
Francelos (Vila Nova de Gaia)	NF2948	30 m
Fresulfe (Vinhais)	PG7140	650 m
Furadouro (Condeixa-a-Nova)	NE4235	250 m
Gondesende (Bragança)	PG7734	790 m
Granja do Ulmeiro (Soure)	NE2845	67 m
Herdade Ribeira Abaixo (Grândola)	NC3718	170 m
Ilha da Murraceira (Figueira da Foz)	NE1542	3 m
Lagoaça (Freixo Espada-a-Cinta)	PF9262	700 m
Lama Grande, Serra de Montesinho (Bragança)	PG8346	1390 m
Louriçal (Pombal)	NE2228	40 m
Lousada	NF6070	290 m
Mata do Choupal (Coimbra)	NE4752	15 m
Minas Santo Adrião (Vimioso)	QG1000	560 m
Mindelo (Vila do Conde)	NF2274	5 m
Moinho do Caniço, Ponte de Castrelos (Bragança)	PG7534	600 m
Monte da Gorda (Aljezur)	NB1929	50 m
Monte de Morais (Macedo de Cavaleiros)	PF8798	650 m
Monte do Guerrero (Castro Verde)	NB9870	165 m
Moura da Serra, Mata da Margarça (Arganil)	NE9252	900 m
Noudar (Barrancos)	PC6927	255 m
Paços de Ferreira	NF5269	300 m
Pampilhosa (Mealhada)	NE4965	100 m
Parque Biológico de Gaia (Vila Nova de Gaia)	NF3650	110 m
Paúl de Madriz (Soure)	NE3141	8 m
Peixeiro (Condeixa-a-Velha)	NE4236	220 m
Pena (Vouzela)	NF7404	880 m
Podre, Castro Laboreiro (Melgaço)	NG6850	800 m
Ponte de Santa Rufina, Pinheiro Novo (Vinhais)	PG5247	585 m
Ponte Nova, Assureira, Castro Laboreiro (Melgaço)	NG6950	750 m
Portas do Rodão (Nisa)	PD1289	150 m
Praia do Palheirão, Tocha (Cantanhede)	NE1570	10 m
Praia do Samouco (Marinha Grande)	NE0007	6 m
Rio Angueira, left bank, Castelo de Algosó (Mogadouro)	QF0092	335 m
Rio Angueira, right bank, Castelo de Algosó (Vimioso)	QF0192	335 m
Ribeira das Furnas, Salgueirais (Vinhais)	PG6341	920 m
Ribeiradio (Oliveira de Frades)	NF5808	340 m

Salema (Vila do Bispo)	NB1502	30 m
Salema, 1 km N. of, (Vila do Bispo)	NB1513	60 m
Santa Clara (Coimbra)	NE4650	80 m
Santo Amaro, E. of Parâmio (Bragança)	PG7940	770 m
Sargaçal (Lagos)	NB2710	30 m
Senhora das Pereiras (Vimioso)	QG0504	680 m
Serra de Janeanes (Penela)	NE4533	350 m
Terreiro das Bruxas, Serra da Lousã (Lousã)	NE6437	650 m
Trinta, by Rio Mondego, Serra da Estrela (Guarda)	PE3785	750 m
Vale da Couda (Alvaiázere)	NE4810	255 m
Vale de Águia (Miranda do Douro)	QG3001	680 m
Vale de Algosó (Vimioso)	QG0507	565 m
Valongo	NF4159	200 m
Vila Nova (Miranda do Corvo)	NE6032	850 m
Vouzela	NF7408	260 m

Recorders

Rui Andrade	Tiago Magalhães
Ricardo Cardoso	Eduardo Marabuto
Catarina Carvalho	Wolfram Mey
Martin Corley	Tatiana Moreira
José Rodrigo Dapena	João Nunes
Isaías Ferreira	Pedro Pires
Jorge Gomes	Fernando Romão
Ana Rita Gonçalves	Jorge Rosete
Valter Jacinto	Carlos Silva
Edmundo Jesus	Peder Skou
Gérard Labonne	Ana Valadares
Paulo Lemos	

Abbreviations and symbols

coll.	collection
comm.	communicated by
conf.	confirmed by
det.	determined by
ZMUC	University of Copenhagen Zoological Museum, Copenhagen, Denmark
*	New for Portugal, i.e. not listed for Portugal in CORLEY (2015b).
(*)	As above but had previously been listed erroneously or questionably.
**	New for the Iberian Peninsula.

Provinces:

AAL	Alto Alentejo
ALG	Algarve
BA	Beira Alta
BAL	Baixo Alentejo
BB	Beira Baixa
BL	Beira Litoral
DL	Douro Litoral



E	Estremadura
M	Minho
TM	Trás-os-Montes

List of families and species

NEPTICULIDAE

** *Stigmella desperatella* (Frey, 1856)

DL: Leafmine on *Malus*, Valongo, 23-VII-2015, Nunes, conf. Z. Laštůvka. Middle latitudes of Europe, absent from much of the north, Spain, Greece and some Mediterranean islands.

Stigmella suberivora (Stainton, 1869)

DL: Parque Biológico de Gaia, 5-IX-2015, Nunes, det. Corley.

Acalyptris platani (Müller-Rutz, 1934)

BL: Mata do Choupal, leafmines on *Platanus*, 3-VII-2015, Gonçalves.

Ectoedemia septembrella (Stainton, 1849)

DL: Valongo, leafmine on *Hypericum*, 1-VII-2015, Nunes.

OPOSTEGIDAE

Opostega salaciella (Treitschke, 1833)

DL: Mindelo, 10-VII-2015, Nunes, Silva and Jesus.

HELIOZELIDAE

Antispila petryi Martini, 1898

Second record. TM: Moinho do Caniço, leafmines on *Cornus sanguinea*, 4-X-2015, Nunes; adult reared (fig. 1).

TISCHERIIDAE

Tischeria dodonaea Stainton, 1858

BA: Pena, 25-VII-2015, Pires, Gonçalves and Nunes; DL: Valongo, 1-VII-2015, leaf miner on *Quercus robur*, Nunes.

Tischeria decidua Wocke, 1876

TM: Carrazedo, 19-VI-2015, Corley.

TINEIDAE

Infurcitinea italica (Amsel, 1954)

TM: Cabecico da Vinha, 18-VI-2015, Corley.

Infurcitinea karadaghica Zagulajev, 1979

BL: Vila Nova, 30-VII-2015, Pires and Rosete, det. Corley.

Infurcitinea montei Amsel, 1957

TM: Ribeira das Furnas, netted by day, 21-VI-2015, Andrade, det. Corley.

Stenoptinea cyaneimarmorella (Millière, 1854)

BL: Ansião, 18-VII-2015, Rosete.

Tinea basifasciella Ragonot, 1895

BL: Buracas de Casmilo, 22-VII-2015, Rosete

Niditinea fuscella (Linnaeus, 1758)

BA: Pena, 25-VII-2015, Pires, Gonçalves and Nunes; DL: Valongo, 9-V-2015, Nunes, det. Corley;

PSYCHIDAE

Epichnopterix plumella (Denis & Schiffermüller, 1775)

BA: Trinta, cases on wall, 15-VI-2015, Corley

BUCCULATRICIDAE

Bucculatrix cidarella (Zeller, 1839)

Third record. TM: França, 21-VI-2015, Corley.

GRACILLARIIDAE

(*) *Caloptilia cuculipennella* (Hübner, 1796)

TM: França, 21-VI-2015, larvae on *Fraxinus angustifolia*, Nunes and Corley; adult reared (fig. 2). Earlier record unconfirmed (CORLEY, 2015b).

Caloptilia robustella Jäckh, 1972

DL: Valongo, larva on *Quercus robur*, 15-V-2015, Nunes, det. Corley.

Phyllonorycter endryella (Mann, 1855)

BL: Ansião, reared 24-I-2015 from leafmine on *Quercus*, Rosete, det. Corley.

Phyllonorycter cocciferella (Mendes, 1910)

BL: Ansião, 18-VII-2015, Rosete, det. Corley.

Phyllonorycter platani (Staudinger, 1870)

BL: Mata do Choupal, 3-VII-2015, leafmines on *Platanus*, Gonçalves.

Phyllonorycter cerasicolella (Herrich-Schäffer, 1855)

M: Dorna, 23-VI-2015, Corley.

Phyllonorycter salictella (Zeller, 1846)

BL: Granja do Ulmeiro, reared 7-II-2015, from leafmine on *Salix*, Rosete, det. Corley.

Phyllonorycter corylifoliella (Hübner, 1796)

TM: Ponte de Santa Rufina, leafmines on *Prunus avium*, 4-X-2015, Corley and Gonçalves.

Phyllonorycter parvifoliella (Ragonot, 1875)

DL: Valongo, leafmines on *Adenocarpus*, 21-II-2015, Nunes.

Phyllonorycter schreberella (Fabricius, 1781)

BL: Coimbra, leafmines on *Ulmus*, 6-IX-2015, Gonçalves.

Phyllonorycter ochreojunctella (Klimesch, 1942)

Second locality. TM: Moinho do Caniço, leafmines on *Acer monspessulanum*, 4-X-2015, Nunes and Gonçalves (fig. 3).

Triberta helianthemella (Herrich-Schäffer, 1860)

BA: Batocas, 27-VII-2014, Pires, Romão and Gonçalves.

Phyllocnistis unipunctella (Stephens, 1834)

DL: Francelos, leafmine on *Populus nigra*, 30-VII-2015, Nunes.

YPONOMEUTIDAE

Ocnerostoma friesei Svensson, 1966

BL: Almagreira, 12-III-2015, Rosete, det. Corley.

GLYPHIPTERIGIDAE

Glyphipterix umbilici M. Hering, 1927

BA: Trinta, by R. Mondego, 15-VI-2015, Corley.

Acrolepiopsis vesperella (Zeller, 1850)

BL: Buracas de Casmilo, larvae on *Smilax aspera*, 29-XII-2015, Pires, Nunes and Gonçalves.

ARGYRESTHIIDAE

Argyresthia perezii Vives, 2001

TM: Cabecico da Vinha, 6-X-2015, Corley and Gonçalves.

Argyresthia albistria (Haworth, 1828)

Second record. TM: França, 28-VI-2015, Rosete.

LYONETIIDAE

Leucoptera malifoliella (Costa, 1836)

DL: Valongo, leafmine on *Malus*, 19-VII-2015, Nunes.

PRAYDIDAE

** *Atemelia torquatella* (Lienig & Zeller, 1846)

TM: Fresulfe, larvae mining *Ulmus minor*, not reared, 27-IX-2005, Corley; Moinho do Caniço, larva mining leaf of *Ulmus minor*, 3-X-2015, parasitised, Gonçalves, det. Corley; larva photographed (fig. 4). Middle and northern latitudes of Europe, south to Bosnia-Herzegovina, but absent from a few countries.

BEDELLIIDAE

Bedellia somnulentella (Zeller, 1847)

DL: Lousada, larvae on *Calystegia sepium*, 13-VII-2015, Cardoso.

AUTOSTICHIDAE

Oegoconia quadripuncta (Haworth, 1828)

BA: Pena, 25-VII-2015, Nunes and Gonçalves, det. Corley.

Symmoca tofosella Rebel, 1893

BL: Buracas de Casmilo, 18-VI-2015, Rosete, det. Corley.

Symmoca perobscurata Gozmány, 1957

AAL: Portas do Rodão, 10-VIII-2015, Rosete, det. Corley.

Symmocoides don (Gozmány, 1963)

BA: Batocas, 15-VI-2015, Corley and Romão.

Dysspastus fallax (Gozmány, 1961)

E: Praia do Samouco, 11-VI-2015, Rosete, det. Corley.

LECITHOCERIDAE

Eurodachtha siculella (Wocke, 1889)

BL: Chão de Couce, 8-VII-2015, Rosete, det. Corley.

OECOPHORIDAE

Hofmannophila pseudospretella (Stainton, 1849)

M: Ponte Nova, Assureira, 8-VIII-2015, Marabuto, Nunes and Gonçalves.

Pleurota ericella (Duponchel, 1839)

BA: Batocas, 15-VI-2015, Corley and Romão.

Pleurota honorella (Hübner, 1813)

BL: Buracas de Casmilo, 18-VI-2015, Rosete.

DEPRESSARIIDAE

* *Agonopterix aspersella* (Constant, 1888)

ALG: Salema, 22-IX-2009, Skou, specimen in ZMUC, det. P. Buchner. Spain, France, Corsica, Sicily, Romania. [*Cytisus*].

Agonopterix scopariella (Heinemann, 1870)

BL: Lourçal, 13-I-2015, Rosete.

Agonopterix thapsiella (Zeller, 1847)

BA: Escarigo, larvae on *Thapsia villosa*, 27-IV-2015, Marabuto and Silva.

Agonopterix subpropinquella (Stainton, 1849)

M: Ponte Nova, Assureira, 8-VIII-2015, Marabuto, Nunes and Gonçalves; TM: Cova da Lua, larva on *Cirsium arvense*, 20-VI-2015, Nunes, det. Corley.

Agonopterix yeatiana (Fabricius, 1781)

TM: Rio Angueira, right bank, 16-VI-2015, Corley.

Agonopterix nervosa (Haworth, 1811)

BL: Condeixa, 17-IX-2015, Ferreira, Jesus and Rosete, det. Corley.

Depressaria depressana (Fabricius, 1775)

Second record. TM: Quinta de São Pedro, 17-VI-2015, Corley.

(*) *Depressaria velox* Staudinger, 1859

E: Praia do Samouco, larvae on *Seseli tortuosum*, 14-VI-2015, Rosete and Corley, det. P. Buchner. Spain, France, Greece.

Depressaria ultimella Stainton, 1849

BL: Lourçal, 14-XII-2014, Rosete, det. Corley.

Depressaria ululana Rössler, 1866

TM: França, 28-VI-2015, Rosete.

Depressaria douglasella Stainton, 1849

TM: França, 21-VI-2015, Corley.

* *Depressaria veneficella* Zeller, 1847

BL: Vila Nova, 30-VII-2015, Pires and Rosete, det. Corley. Spain, southern Balkan countries and several Mediterranean islands. [*Thapsia*].

(*) *Ethmia fumidella* (Wocke, 1850) ssp. *delattini* Agenjo, 1964

BAL: Noudar, 2-IV-2015, Gonçalves, det. Corley. Spain, France, Central Europe, extending to Poland and south-eastwards to Greece. Larva unknown.

Ethmia terminella Fletcher, 1938

BAL: Herdade Ribeira Abaixo, 13-V-2006, Marabuto.

Odites kollarella (Costa, 1832)

BL: Fonte Fria, Mata do Buçaco, 20-VIII-2015, Jesus, det. Corley.

COSMOPTERIGIDAE

Sorhagenia rhamniella (Zeller, 1839)

TM: Barragem de Paradela, 12-VII-2015, Rosete, det. Corley.

Coccidiphila gerasimovi Danilevsky, 1950

AAL: Portas do Rodão, 10-VIII-2015, Rosete, det. Corley.

Vulcaniella grobowiella (Staudinger, 1859)

BA: Batocas, 27-VII-2015, Pires, Romão and Gonçalves, det. Corley.

GELECHIIDAE

Syncopacma sangiella (Stainton, 1863)

AAL: Portas do Rodão, 10-VIII-2015, Rosete, det. Corley; BA: Batocas, 27-VII-2015, Pires, Romão and Gonçalves, det. Corley.

** *Syncopacma buvati* Nel, 1995

BL: Chão de Couce, 8-VII-2015, Rosete, det. Corley. France. [*Coronilla minima*].

Mesophleps corsicella Herrich-Schäffer, 1856

BA: Batocas, 15-VI-2015, Corley and Romão.

Mesophleps silacella (Hübner, 1796)

M: Podre, 22-VI-2015, Corley.

Anarsia lineatella Zeller, 1839

TM: Quinta de São Pedro, 17-VI-2015, Corley.

* *Dichomeris helianthemi* (Walsingham, 1903)

E: Praia do Samouco, 10-X-2014, Rosete, det. Corley. Spain, France, Sardinia. [*Helianthemum lavandulaefolium*].

Dichomeris acuminatus (Staudinger, 1876)

DL: Parque Biológico de Gaia, 5-IX-2015, Nunes, Silva and Jesus.

Brachmia blandella (Fabricius, 1798)

TM: Barragem de Paradela, 12-VII-2015, Rosete.

Helcystogramma lutatella (Herrich-Schäffer, 1854)

BL: Vila Nova, 30-VII-2015, Pires and Rosete.

Acompsia schmidtellus (Heyden, 1848)

BL: Buracas de Casmilo, 18-VI-2015, Rosete.

Bryotropha vndermuhlli Nel & Brusseaux, 2003

BL: Buracas de Casmilo, 22-VII-2015, Rosete, det. Corley.

Bryotropha basaltinella (Zeller, 1839)

M: Ponte Nova, Assureira, 8-VIII-2015, Marabuto, Nunes and Gonçalves, det. Corley.

Bryotropha senectella (Zeller, 1839)

BL: Vila Nova, 30-VII-2015, Pires and Rosete, det. Corley.

Aristotelia brizella (Treitschke, 1833)

E: Praia do Samouco, 11-VI-2015, Rosete.

Isophrictis anthemidella (Wocke, 1871)

BL: Buracas de Casmilo, 18-VI-2015, Rosete, det. Corley.

Monochroa lucidella (Stephens, 1834)

TM: Rio Angueira, right bank, 16-VI-2015, Corley.

Monochroa hornigi (Staudinger, 1883)

BL: Lourçal, 7-VIII-2015, Rosete.

Monochroa melagonella (Constant, 1895)

BL: Chão de Couce, 8-VII-2015, Rosete, det. Corley.

Ornativulva pseudotamariciella Sattler, 1967

The species name is incorrectly spelt *pseudotamaricella* on pages 28 and 89 of CORLEY (2015b); likewise the synonym *tamariciella* is also misspelt.

Neofriseria singula (Staudinger, 1876)

BA: Batocas, 27-VII-2015, Pires, Romão and Gonçalves, det. Corley.

Mirificarma mulinella (Zeller, 1839)

BB: Fonte do Cuco, 7-X-2015, Corley, Gonçalves and Andrade.

Gelechia senticetella (Staudinger, 1859)

Second and third records. AAL: Portas do Rodão, 10-VIII-2015, Rosete, det. Corley; TM: Quinta de São Pedro, 17-VI-2015, Corley.

Scrobipalpa acuminatella (Sircom, 1850)

TM: Barragem de Paradela, 12-VII-2015, Rosete, det. Corley.

Scrobipalpa corleyi Huemer & Karsholt, 2010

TM: França, 21-VI-2015, flying by day, Corley; larvae on *Phalacrocarpum hoffmannseggi*, 3-X-2015, Corley and Gonçalves. Portuguese endemic previously known only from Serra da Estrela, where the food-plant is *Phalacrocarpum oppositifolium*.

Scrobipalpa instabilella (Douglas, 1846)

BL: Ilha da Murraceira, 23-VI-2015, Rosete, det. Corley.

Scrobipalpa obsoletella (Fischer von Röslerstamm, 1841)

DL: Mindelo, 10-VII-2015, Nunes, det. Corley.

Scrobipalpa phagnalella (Constant, 1895)

TM: Cabecico da Vinha, 6-X-2015, Corley, Gonçalves and Andrade.

Scrobipalpa artemisiella (Treitschke, 1833)

Second record. M: Cainheiras, 23-VI-2015, Corley. The first record, from saltmarsh in Algarve (CORLEY *et al.*, 2012), is slightly questionable.

Teleiodes italica Huemer, 1992

Second to fourth localities. BL: Chão de Couce, 8-VII-2015, Rosete, det. Corley; TM: Ribeiro Angueira, 16-VI-2015, Corley; França, 28-VI-2015, Rosete.

Teleiodes albidorsella Huemer & Karsholt, 1999

BL: Chão de Couce, 8-VII-2015, Rosete, det. Corley.

Telphusa cistiflorella (Constant, 1890)

BB: Fonte do Cuco, 7-X-2015, Corley, Gonçalves and Andrade.

ELACHISTIDAE

Elachista cinereopunctella (Haworth, 1828)

BL: Paúl de Madriz, 23-IX-2004, Corley. The earlier record for this species (CORLEY *et al.*, 2007) is a misidentification of *E. igaloensis*, see below.

* *Elachista igaloensis* Amsel, 1951

BL: Santa Clara, 12-V-2006, Corley and Pires. The specimen was previously misidentified as *E. cinereopunctella* (CORLEY *et al.*, 2007). See the discussion in the Recent Literature section below, regarding the generic placement of this and other species that have been placed in *Biselachista*. Spain, Corsica, Sardinia, Balkans. Larva unknown.

Elachista stabilella Stainton, 1858

DL: Valongo, 9-V-2016, Nunes, det. Corley.

Blastodacna hellerella (Duponchel, 1838)

TM: Minas Santo Adrião, 1-V-2015, Marabuto, Gonçalves, Silva, Ferreira, Jesus and Dapena.

* *Haplochrois ochraceella* (Rebel, 1903)

BA: Pena, 25-VII-2015, Pires, Romão, Nunes and Gonçalves, det. Corley. Spain, France, Central Europe and the Balkans. Larva unknown.

COLEOPHORIDAE

Coleophora luteochrella Baldizzone & Tabell, 2009

BL: Ansião, 18-VII-2015, Rosete, det. Corley.

Coleophora lusciniapennella (Treitschke, 1833)

BL: Paúl de Madriz, 25-VI-2015, Rosete, det. Corley.

Coleophora binderella (Kollar, 1832)

BA: Pena, 25-VII-2015, Nunes and Gonçalves, det. Corley.

* *Coleophora staehelinella* Walsingham, 1891

BL: Serra de Janeanes, 30-IX-2015, Rosete, Jesus and Ferreira, det. Corley. Spain, France. [*Staehelina dubia*].

Coleophora pterosparti Mendes, 1910

BL: Vila Nova, 30-VII-2015, Pires and Rosete, det. Corley; M: Podre, 22-VI-2015, Corley; TM: França, 28-VI-2015, Rosete, det. Corley.

Coleophora trifariella Zeller, 1849

M: Cainheiras, 23-VI-2015, Corley.

Coleophora genistae Stainton, 1857

BL: Vila Nova, 30-VII-2015, Pires and Rosete, det. Corley.

Coleophora acrisella Millière, 1872

BL: Alfarelos, case on *Cytisus*, 8-III-2015, Gonçalves.

Coleophora hieronella Zeller, 1849

M: Podre, 22-VI-2015, Corley.

Coleophora zelleriella Heinemann, 1854

BL: Paúl de Madriz, 25-VI-2015, Rosete, det. Corley; BA: Pena, 25-VII-2015, Pires, Romão, Nunes and Gonçalves, det. Corley.

Coleophora involucrella Chrétien, 1901

TM: Monte de Morais, larvae on *Santolina semidentata*, 3-V-2015, Marabuto, Silva, Gonçalves, Ferreira and Jesus.

* *Coleophora ononidella* Millière, 1879

TM: Rio Angueira, right bank, 16-VI-2015, Corley. Spain, France, central Europe and Balkans, Crete, absent from several countries. [*Ononis*].

Coleophora lixella Zeller, 1849

Second record. TM: França, 21-VI-2015, Corley.

Coleophora caespitiella Zeller, 1839

BL: Paúl de Madriz, 25-VI-2015, Rosete, det. Corley.

Coleophora alticolella Zeller, 1849

BL: Paúl de Madriz, 25-VI-2015, Rosete, det. Corley.

Coleophora luteolella Staudinger, 1880

BL: Buracas de Casmilo, 22-VII-2015, Rosete, det. Corley.

Coleophora striatipennella Nylander, 1848

Second record. TM: Ribeira das Furnas, caught by day, 21-VI-2015, Corley.

Coleophora saponariella Heeger, 1848

BA: Vouzela, cases on *Saponaria*, 25-VII-2015, Nunes, Pires, Jesus and Gonçalves.

SCYTHRIDIDAE

Scythris parafuscoana Bengtsson, 1991

BA: Batocas, 27-VII-2015, Pires, Romão and Gonçalves.

Scythris cistorum (Millière, 1876)

BL: Lourçal, 9-VIII-2015, Rosete, det. Corley.

STATHMOPODIDAE

* *Neomariania partinicensis* (Rebel, 1937)

ALG: Alfanfina, 4-10-IX-2015, Mey. Spain, France, Greece, Sicily, Malta. Larva unknown.

MOMPHIDAE

Mompha epilobiella (Denis & Schiffermüller, 1775)

TM: Quinta de São Pedro, 17-VI-2015, Corley.

Urodeta hibernella (Staudinger, 1859)

BA: Batocas, 15-VI-2015, Corley and Romão.

PTEROLONCHIDAE

Pterolonche albescens Zeller, 1847

AAL: Portas do Rodão, 10-VIII-2015, Rosete, det. Corley; BL: Chão de Couce, 8-VII-2015, Rosete.

Pterolonche inspersa Staudinger, 1859
M: Cainheiras, 23-VI-2015, Corley.

PTEROPHORIDAE

Agdistis heydeni (Zeller, 1852)
BL: Ansião, 18-VII-2015, Rosete, det. Corley.

Agdistis satanas Millière, 1875
DL: Valongo, 13-VII-2015, Nunes, det. Corley.

* *Stenoptilia pterodactyla* (Linnaeus, 1761)
TM: Ribeira das Furnas, caught by day, 21-VI-2015, Corley. Almost all Europe. [*Veronica chamaedrys*].

Crombrugghia distans (Zeller, 1847)
BL: Louriçal, 20-VI-2015, Rosete, det. Corley; TM: Carrazedo, 19-VI-2015, Corley.

Merrifieldia malacodactylus (Zeller, 1847)
BA: Batocas, 15-VI-2015, Corley and Romão.

Gypsochares bigoti Gibeaux & Nel, 1989
BL: Serra de Janeanes, 30-IX-2015, Rosete, det. Corley.

EPERMENIIDAE

Ochromolopis icella (Hübner, 1813)
M: Cainheiras, 23-VI-2015, Corley.

Ochromolopis staintonellus (Millière, 1869)
TM: Cabecico da Vinha, 18-VI-2015, Corley.

CHOREUTIDAE

* *Choreutis pariana* (Clerck, 1759)
DL: Valongo, cocoon on *Malus*, 20-V-2015, Nunes; adult reared (fig. 5). Most of Europe except for Ireland, Mediterranean islands and parts of the Balkans.

TORTRICIDAE

Isotrias hybridana (Hübner, 1917)
TM: Barragem de Paradela, 12-VII-2015, Rosete, det. Corley.

Avaria hyerana (Millière, 1858)
TM: Cabecico da Vinha, 6-X-2015, Corley, Andrade and Gonçalves.

Archips crataegana (Hübner, 1799)
TM: Gondesende, 2-VII-2014, Corley; Carrazedo, 19-VI-2015, Corley.

Lozotaenia cupidinana (Staudinger, 1859)
E: Praia do Samouco, larvae on *Cytisus*, 14-VI-2015, Corley.

Eana nevadensis (Rebel, 1928)

Third record. M: Cainheiras, 23-VI-2015, Corley.

Cnephasia conspersana Douglas, 1846

BL: Buracas de Casmilo, 18-VI-2015, Rosete, det. Corley; BA: Batocas, 15-VI-2015, Corley and Romão.

Cnephasia longana (Haworth, 1811)

BA: Batocas, 15-VI-2015, Corley and Romão.

* *Cnephasia heinemanni* Obraztsov, 1956

TM: França, 21-VI-2015, Corley. France, Italy, Switzerland, Germany, Balearic Islands, Sardinia, Sicily. Larva unknown.

* *Phalonidia affinitana* (Douglas, 1846)

BL: Ilha da Murraceira, 23-VI-2015, Rosete, det. Corley. Most of Europe, but absent from most northerly parts, some Mediterranean islands and Greece. [*Aster tripolium*].

Phalonidia contractana (Zeller, 1847)

BL: Furadouro, 7-IX-2015, Ferreira, Gonçalves and Jesus.

Eupoecilia angustana (Hübner, 1799)

ALG: Alcoutim, 5-IV-2015, Labonne; BL: Buracas de Casmilo, 18-VI-2015, Rosete; Furadouro, 25-VI-2015, Ferreira and Jesus; TM: Carrazedo, 19-VI-2015, Corley.

Aethes margarotana (Duponchel, 1836)

TM: Quinta de São Pedro, 17-VI-2015, Corley.

Aethes tessera (Denis & Schiffermüller, 1775)

BA: Ribeiradio, 7-VI-2015, Marabuto.

* *Aethes flagellana* (Duponchel, 1836)

TM: Cabecico da Vinha, 18-VI-2015, Corley. South and middle latitudes of Europe north to Netherlands and Lithuania. [*Eryngium campestre*].

Aethes deaurana (Peyerimhoff, 1877)

TM: Lagoaça, 28-IV-2015, Marabuto, Silva and Moreira.

* *Cochylidia moguntiana* (Rössler, 1864)

E: Praia do Samouco, 16-V-2015, 9-X-2015, Rosete, det. Corley. Spain, middle latitudes of Europe from Italy, Denmark and Sweden eastwards, absent from most of the west and the south-east. [*Artemisia campestris*].

Cochylis molliculana Zeller, 1847

ALG: Alcoutim, 5-IV-2015, Labonne.

Aeimma loeflingiana (Linnaeus, 1758)

BL: Buracas de Casmilo, 25-VII-2015, Rosete,

Acleris ferrugana (Denis & Schiffermüller, 1775)

BA: Pena, 25-VII-2015, Pires, Romão and Gonçalves, det. Corley.

* *Orthotaenia undulana* (Denis & Schiffermüller, 1775)

TM: Carrazedo, 19-VI-2015, Corley; França, 21-VI-2015, Corley. All Europe except Greece and some Mediterranean islands. [Larva polyphagous on trees and shrubs].

* *Hedya salicella* (Linnaeus, 1758)

TM: França, 28-VI-2015, Rosete. All Europe except Ireland and some Mediterranean islands. [*Salix* and *Populus*].

Hedya atropunctana (Zetterstedt, 1839)

Third record. DL: Valongo, larva on *Pyrus cordata*, 1-VI-2015, Nunes.

* *Celypha striana* (Denis & Schiffermüller, 1775)

TM: Cabecico da Vinha, 18-VI-2015, Corley. All Europe except some Mediterranean islands. [*Taraxacum* and *Plantago lanceolata*].

Lobesia quaggana (Mann, 1855)

E: Praia do Samouco, 15-V-2015, Rosete.

Ancylis achatana (Denis & Schiffermüller, 1775)

Third locality. TM: França, 21-VI-2015, Corley.

Epinotia immundana (Fischer von Röslerstamm, 1839)

BL: Pampilhosa, 20-IV-2015, Jesus and Ferreira, det. Corley.

Epinotia tenerana (Denis & Schiffermüller, 1775)

DL: Parque Biológico de Gaia, 22-V-2015, Nunes, Silva and Jesus.

Notocelia uddmanniana (Linnaeus, 1758)

BL: Paúl de Madriz, 25-VI-2015, Rosete.

Dichrorampha chavanneana (La Harpe, 1858)

Second record. TM: França, 21-VI-2015, Corley.

Cydia gilviciliana (Staudinger, 1859)

ALG: Alcoutim, 5-IV-2015, Labonne, det. J. Nel.

* *Grapholita tenebrosana* (Duponchel, 1843)

TM: Carrazedo, 19-VI-2015, Corley. Almost all Europe, except a few Mediterranean islands. [Larva in fruits of *Rosa*].

Lathronympha strigana (Fabricius, 1775)

TM: França, 21-VI-2015, Corley.

** *Pammene gallicolana* (Lienig & Zeller, 1846)

TM: Rio Angueira, right bank, 16-VI-2015, Corley. Central and south-east Europe from Netherlands to Greece. [Larva in galls of Cynipidae on *Quercus*].

BRACHODIDAE

(*) *Brachodes funebris* (Feisthamel, 1833)

AAL: Portas do Rodão, 10-VIII-2015, Rosete, det. Corley. France, Spain. Larva unknown.

SESIIDAE

Synanthedon stomoxiformis (Hübner, 1790)

TM: França, by day, 20-VI-2015, Nunes.

LIMACODIDAE

* *Heterogenea asella* (Denis & Schiffermüller, 1775)

BL: Benfeita, larvae on *Castanea sativa*, 26-VIII-2015, Lemos; adults emerged VI-2016. Almost all Europe, absent from Ireland and most Mediterranean islands. In Spain it appears to be confined to Catalonia. It is unlikely that this is a long overlooked native Portuguese species. More probably it is a recent accidental introduction resulting from international trade in young trees.

ZYGAENIDAE

Zygaena hilaris Ochsenheimer, 1808

BL: Serra de Janeanes, by day, 10-VI-2015, Rosete.

PYRALIDAE

Galleria mellonella (Linnaeus, 1758)

BL: Praia do Palheiro, 11-IX-2015, Rosete.

Stemmatophora combustalis (Fischer von Röslerstamm, 1842)

BL: Chão de Couce, 8-VII-2015, Rosete.

Anerastia lotella (Hübner, 1813)

E: Praia do Samouco, 16-V-2016, Rosete.

Pempelia genistella (Duponchel, 1836)

BA: Pena, 25-VII-2015, Pires and Gonçalves, det. Corley.

Etiella zinckenella (Treitschke, 1832)

BL: Serra de Janeanes, 30-IX-2015, Rosete, Ferreira and Jesus.

Epischmia illotella Zeller, 1839

TM: Rio Angueira, right bank, 16-VI-2015, Corley.

Ceutholopha isidis (Zeller, 1867)

AAL: Portas do Rodão, 10-VIII-2015, Rosete.

Moitrelia hispanella (Staudinger, 1859)

TM: Cabecico da Vinha, 18-VI-2015, Corley, det. Slamka.

Pempeliella ornatella (Denis & Schiffermüller, 1775)

BA: Batocas, 15-VI-2015, Corley and Romão.

Oxybia transversella (Duponchel, 1836)

BL: Vale da Couda, 8-X-2015, Corley, Rosete and Gonçalves.

Pseudacrobasis tergestella (Ragonot, 1901)

AAL: Portas do Rodão, 10-VIII-2015, Rosete.

Acrobasis tumidana (Denis & Schiffermüller, 1775)

BL: Vila Nova, 30-VII-2015, Pires and Rosete, det. Corley.

** *Acrobasis fallouella* (Ragonot, 1871)

BA: Pena, 25-VII-2015, Pires, Romão, Jesus, Nunes, Silva and Gonçalves, det. Corley. France. [*Quercus*].

Eccopisa effractella Zeller, 1848

TM: Rio Angueira, right bank, 16-VI-2015, Corley.

Delete *Ancylosis sareptalla* (Herrich-Schäffer, 1861)

The record belongs to *A. albidella*, see below. In the paragraph below the spelling of *sareptalla* or *sareptella* follows whichever was used in the papers referred to.

(*) 1526 *Ancylosis albidella* (Ragonot, 1888)

ALG: Carrapateira, 18-IV-1993, Corley. Spain, Hungary, Slovakia. Larva unknown.

The record from Algarve given in CORLEY *et al.* (2000) was given under *A. sareptalla* in CORLEY (2015b), following the synonymisation of *albidella* and *sareptalla* by LERAUT (2014). It has now become clear that this synonymisation was unjustified. LERAUT (*loc. cit.*) claimed that ROESLER (1973) had made a mistake in his drawing of *sareptella*, but it is very clear from Roesler's text that this was not the case.

The Algarve record has a complicated history. On 18-IV-1993, Corley collected a male and a female *Ancylosis* at Carrapateira. Examination of the genitalia of both sexes led to the erroneous conclusion that the species present was *A. xylinella* (Staudinger, 1870) and this was published as new for Portugal (CARVALHO & CORLEY, 1995). A few years later both genitalia preparations were examined by Jan Asselbergs. He referred the male to *A. albidella* and the female to *A. sareptella*. These identifications were published, as two species new for Portugal, in CORLEY *et al.* (2000) and *A. xylinella* was deleted. Following Leraut's synonymisation of *albidella* and *sareptalla*, the record based on the male of *albidella* was placed under *sareptalla* in CORLEY (2015b). Recently, Corley has re-examined the material and concluded that the male is unquestionably *albidella*. The female does not match the figures given by ROESLER (*loc. cit.*) for either *sareptella* or *xylinella*. However, Roesler does not figure the female genitalia of *albidella*, so it is reasonable to suppose, besides being the simplest answer, that the female is that of *albidella*. This concurs with the original supposition in CARVALHO & CORLEY (1995) that the male and female belonged to the same species.

Homoeosoma capsitanella (Chrétien, 1911)

BAL: Monte do Guerrero, 15-IV-2015, Labonne.

Phycitodes bentinckella (Pierce, 1937)

ALG: Monte da Gorda, 9-IV-2015, Labonne, det. T. Varenne; AAL: Portas do Rodão, 10-VIII-2015, Rosete, det. Corley; TM: Quinta de São Pedro, 17-VI-2015, Corley.

Plodia interpunctella (Hübner, 1813)

TM: Cerejais, in house, 16-VI-2016, Corley.

Ephestia elutella (Hübner, 1796)

AAL: Portas do Rodão, 10-VIII-2015, Rosete, det. Corley.

CRAMBIDAE

Pyrausta sanguinalis (Linnaeus, 1767)

M: Podre, 23-VI-2015, Corley.

Pyrausta neglectalis Caradja, 1916

AAL: Brotas, 10-V-2015, Marabuto; TM: Rio Angueira, left bank, 1-V-2015, Marabuto and Silva; Balsamão, 8-VI-2015, Marabuto.

Sitochroa palealis (Denis & Schiffermüller, 1775)

BL: Chão de Couce, 8-VII-2015, Rosete.

Udea institalis (Hübner, 1819)

Third record. TM: Cabecico da Vinha, larva on *Eryngium campestre*, 18-VI-2015, Corley.

Herpetogramma licarsisalis (Walker, 1859)

E: Praia do Samouco, 9-X-2015, Corley and Rosete.

Scoparia subfusca Haworth, 1811

M: Albergaria, 12-VII-2015, Rosete, det. Corley.

Catoptria pinella (Linnaeus, 1758)

BL: Vila Nova, 30-VII-2015, Pires and Rosete.

Xanthocrambus delicatellus (Zeller, 1863)

BL: Buracas de Casmilo, 22-VII-2015, Rosete.

Pediasia siculellus (Duponchel, 1836)

BB: Fonte do Cuco, 7-X-2015, Corley, Gonçalves and Andrade.

Ancylolomia tentaculella (Hübner, 1796)

BL: Buracas de Casmilo, 4-IX-2015, Rosete.

Elophila feili Speidel, 2002

TM: Quinta de São Pedro, 17-VI-2015, Corley.

DREPANIDAE

Falcaria lacertinaria (Linnaeus, 1758)

M: Ponte Nova, larva on *Betula pubescens*, 8-VIII-2016, Marabuto, Gonçalves and Nunes.

LASIOCAMPIDAE

Malacosoma neustria (Linnaeus, 1758)

BA: Batocas, 15-VI-2015, Corley and Romão.

SPHINGIDAE

Hyles euphorbiae (Linnaeus, 1758)

TM: Quinta de São Pedro, larva on *Euphorbia segetalis*, 17-VI-2015, Corley.

GEOMETRIDAE

Idaea lusohispanica Herbulot, 1991

TM: Cabecico da Vinha, 18-VI-2015, Corley.

Idaea obsoletaria (Rambur, 1833)

BL: Terreiro das Bruxas, 30-IV-2015, Rosete.

Idaea biselata (Hufnagel, 1767)

BA: Pena, 25-VII-2015, Pires, Romão, Jesus and Gonçalves.

Scopula decorata (Denis & Schiffermüller, 1775)

BL: Chão de Couce, 8-VII-2015, Rosete.

Cyclophora quercimontaria (Bastelberger, 1897)

BA: Pena, 25-VII-2015, Pires, Romão and Gonçalves, det. Corley.

Rhometra sacraria (Linnaeus, 1767)

TM: Vale de Algosó, larva on *Polygonum aviculare*, 6-X-2015, Corley.

Scotopteryx coelinaria (Graslin, 1863)

BL: Vila Nova, 30-VII-2015, Pires, Jesus and Rosete.

Xanthorhoe designata (Hufnagel, 1767)

Second record. M: Podre, 22-VI-2015, Corley.

Catarhoe cuculata (Hufnagel, 1767)

TM: Barragem de Paradela, 12-VII-2015, Rosete.

Pennithera firmata (Hübner, 1822)

TM: França, 3-X-2015, Corley, Nunes and Silva.

Operophtera brumata (Linnaeus, 1758)

BL: Moura da Serra, 6-XII-2015, Rosete; Buracas de Casmiolo, 18-XII-2015, Pires, Nunes, Gonçalves and Moreira.

* *Hydrelia flammeolaria* (Hufnagel, 1767)

M: Podre, 22-VI-2014, Corley. Most of Europe, absent from southernmost parts and most Mediterranean islands. [*Acer* and *Alnus*].

Horisme scorteata (Staudinger, 1901)

BA: Escarigo, 27-IV-2015, Marabuto and Silves.

Eupithecia oxycedrata (Rambur, 1833)

BA: Escarigo, 27-IV-2015, Marabuto and Silves.

* *Eupithecia rosmarinata* Dardoin & Millière, 1865

ALG: Corte do Gago, 1-XII-2012, Jacinto, conf. Corley from photo (fig. 6). Spain, France. [*Rosmarinus*, *Thymus*].

* *Eupithecia semigraphata* Bruand 1850

BL: Ansião, 18-VII-2015, Rosete, det. Corley. Southern and central Europe, north to Belgium and Poland. [*Thymus*, *Calamintha*, *Origanum* etc.].

Eupithecia nanata (Hübner, 1813)

BA: Pena, 25-VII-2015, Pires, Romão and Gonçalves.

Myinodes interpunctaria (Herrich-Schäffer, 1839)

BL: Peixeiro, 27-III-2015, Pires and Rosete.

Lomaspilis marginata (Linnaeus, 1758)

BA: Ribeiradio, 7-VI-2015, Marabuto.

Macaria artesiaria (Denis & Schiffermüller, 1775)

BA: Batocas, 27-VII-2015, Pires, Romão and Gonçalves.

Perigune convergata (de Villers, 1789)

BL: Vale da Couda, 8-X-2015, Corley, Rosete and Gonçalves.

Ennomos quercaria (Hübner, 1813)

BL: Vila Nova, 30-VII-2015, Pires, Jesus, Ferreira and Rosete.

Crocallis tuscaria (Borkhausen, 1793)

BB: Fonte do Cuco, 7-X-2015, Corley, Gonçalves and Andrade.

Chlorissa cloraria (Hübner, 1813)

TM: Barragem de Paradela, 12-VII-2015, Rosete.

NOTODONTIDAE

* *Clostera curtula* (Linnaeus, 1758)

TM: Fresulfe, 16-V-2012, Marabuto and Magalhães; Cova da Lua, 10-V-2015, Gonçalves, Andrade and Silva; Senhora das Pereiras, 30-IV-2015, Marabuto and Silva; DL: Parque Biológico de Gaia, 9-IV-2015, Gomes, det. Marabuto. Almost all Europe, absent from Ireland and some Mediterranean islands. [*Populus*].

EREBIDAE

Cymbalophora pudica (Esper, 1785)

Unusual date. DL: Paços de Ferreira, 25-IV-2015 (adult), Carvalho, comm. Nunes.

Eilema depressa (Esper, 1787)

TM: França, 28-VI-2015, Rosete.

Paracolax tristalis (Fabricius, 1794)

BA: Ribeiradio, 7-VI-2015, Marabuto.

Herminia tarsipennalis (Treitschke, 1835)

BA: Ribeiradio, 7-VI-2015, Marabuto.

Herminia tarsicrinalis (Knoch, 1782)

BA: Ribeiradio, 7-VI-2015, Marabuto.

Odice pergrata (Rambur, 1858)

BA: Batocas, 15-VI-2015, Corley and Romão.

Eublemma pura (Hübner, 1813)

AAL: Portas do Rodão, 10-VIII-2015, Rosete.

Catocala nymphaea (Esper, 1787)

TM: Cabecico da Vinha, 18-VI-2015, Corley.

NOCTUIDAE

Chrysodeixis acuta (Walker, 1858)

E: Praia do Samouco, 9-X-2015, Rosete.

* *Euchalcia modestoides* Poole, 1989

TM: Cruzes, larva on *Pulmonaria longifolia*, 11-VI-2012, Marabuto, not reared, more than 2000 *Copidosoma* sp. (Hymenoptera, Encyrtidae) parasitoids emerged from the withered larva after 18 days; Carrazedo, adult 24-VI-2012, Rosete. Middle latitudes of Europe from Spain, Belgium and Finland eastwards.

Diloba caeruleocephala (Linnaeus, 1758)

TM: Lagoaça, larvae on *Prunus avium* and *Pyrus cordata*, 28-IV-2015, Marabuto, Silva and Moreira.

Panemeria tenebrata (Scopoli 1763)

Second record. M: Podre, larva on *Cerastium fontanum*, 23-VI-2015, Corley.

* *Cucullia reisseri* Boursin, 1933

TM: Rio Angeira, left bank, 27-IV-2015, Marabuto and Silva. Spain, France. [*Verbascum*].

Calophasia hamifera Staudinger, 1863

BL: Buracas de Casmilo, 7-IV-2015, Gonçalves, Ferreira and Jesus, conf. Marabuto.

Stilbia andalusiaca Staudinger, 1892

BB: Fonte do Cuco, 7-X-2015, Corley, Gonçalves and Andrade.

Amephana anarrhini (Duponchel, 1840)

BA: Escarigo, 27-IV-2015, Marabuto and Silva.

(*) *Meganephria bimaculosa* (Linnaeus, 1767)

TM: Cabecico da Vinha, X-2015, Corley, Andrade and Gonçalves (fig. 7). South and middle latitudes of Europe, north to England and Poland, absent from several countries and Mediterranean islands. [*Ulmus*, *Prunus*].

Bryophila raptricula (Denis & Schiffermüller, 1775)

AAL: Portas do Rodão, 10-VIII-2015, Rosete.

Dypterygia scabriuscula (Linnaeus, 1758)

BA: Ribeiradio, 7-VI-2015, Marabuto.

Pseudenargia ulicis (Staudinger, 1859)

BB: Fonte do Cuco, 7-X-2015, Corley, Gonçalves and Andrade.

Unchelea myodea (Rambur, 1858)

E: Praia do Samouco, 18-IV-2015, Rosete.

Denticucullus pygmina (Haworth, 1809)

BB: Fonte do Cuco, 7-X-2015, Corley, Gonçalves and Andrade.

Mesapamea didyma (Esper, 1788)

TM: Cabecico da Vinha, 18-VI-2015, Corley.

Conistra intricata (Boisduval, 1829)

Third locality. BL: Escampado de São Miguel, 1-XII-2015, Rosete.

Conistra erythrocephala (Denis & Schiffermüller, 1775)

BL: Moura da Serra, 6-XII-2015, Rosete; BA: Ribeiradio, 18-XI-2015, Marabuto.

Scotochrosta pulla (Denis & Schiffermüller, 1775)

BB: Fonte do Cuco, 7-X-2015, Corley, Gonçalves and Andrade.

Cosmia trapezina (Linnaeus, 1758)

TM: Barragem de Paradela, 2-VII-2015, Rosete.

Orthosia gothica (Linnaeus, 1758)

TM: Santo Amaro, larva on *Filipendula ulmaria*, 21-VI-2015, Corley.

Tholera decimalis (Poda, 1761)

BL: Vale da Couda, 8-X-2015, Corley, Rosete and Gonçalves.

Anarta trifolii (Hufnagel, 1766)

BL: Ilha da Murraceira, 23-VI-2015, Rosete.

Polia nebulosa (Hufnagel, 1766)

TM: França, 21-VI-2015, Corley.

Lacanobia contigua (Denis & Schiffermüller, 1775)

TM: Lama Grande, at wine rope, 20-VI-2015, Corley.

Hadena silenides (Staudinger, 1895)

Third confirmed record. BAL: Noudar, 15-III-2015, Gonçalves and Silva.

(*) *Lasionycta proxima* (Hübner, 1809)

TM: Lama Grande, 19-VI-2004, Marabuto and Maravalhas; 20-VI-2015, Corley. Most of Europe including Fennoscandia, but missing from the north-west and Mediterranean islands. [Larva polyphagous on herbaceous plants]. The genus was given as *Lasionhada* Berio, 1981 in CORLEY (2015b).

Dichagyris constanti (Millière, 1860)

Third record. TM: França, 3-X-2015, Corley, Nunes and Silva.

Agrotis clavis (Hufnagel, 1766)

M: Cainheiras, 23-VI-2015, Corley.

Diarsia brunnea (Denis & Schiffermüller, 1775)

TM: Barragem de Paradela, 12-VII-2015, Rosete.

Noctua interposita (Hübner, 1790)

Second record. TM: Lama Grande, 20-VI-2015, Corley, Nunes and Silva.

NOLIDAE

Nola confusalis (Herrich-Schäffer, 1847)

DL: Árvore, 20-IV-2015, Gonçalves, Ferreira, Nunes and Jesus.

* *Nola thymula* Millière, 1867

TM: Vale de Águia, 2-V-2015, Marabuto, Silva, Gonçalves, Ferreira, Jesus and Dapena (fig. 8). Spain, France, Italy. [*Thymus*].

Nycteola asiatica (Krulikovsky, 1904)

DL: Parque Biológico de Gaia, 5-IX-2015, Silva, Nunes and Jesus.

* *Garella nilotica* (Rogenhofer, 1882)

ALG: Sargaçal, 24-X-2015, Valadares, det. Marabuto, in coll. Marabuto. Spain, Malta, Greece. [*Tamarix*].

Erratum

In CORLEY *et al.* (2014, 2015) the locality Praia do Samouco is incorrectly placed in Beira Litoral. It is actually in Estremadura.

Recent literature

CORLEY (2015a) gives the results of study of various historical collections, resulting in the addition of 12 species and the deletion of 93. These changes were incorporated in CORLEY (2015b).

CORLEY (2015b) provides an updated list of Portuguese Lepidoptera up to the end of 2014, with the first reliable record for each of 2588 accepted species and reasons for exclusion of 398 erroneous or unconfirmed species.

CORLEY *et al.* (2015) add 38 species to the Portuguese Lepidoptera fauna and delete three. These changes were incorporated in CORLEY (2015b).

KAILA (2015) has revised the *Elachista dispunctella* complex. This results in *E. occidentella* Traugott-Olsen, 1992 being reduced to synonymy with *E. hispanica* Traugott-Olsen, 1992. They were included as separate species in CORLEY (2015b).

LAŠTŮVKA & LAŠTŮVKA (2015) add *Stigmella stettinensis* (Heinemann, 1971) to the Portuguese fauna.

PARENTI & PIZZOLATO (2015) argue in favour of the resurrection of *Biselachista* Traugott-Olsen & Nielsen, 1977 from synonymy with *Elachista*. The Portuguese species affected are *Elachista cinereopunctella* (Haworth, 1828), *E. igaloensis* (Amsel, 1951), *E. scirpi* Stainton, 1887, *E. utonella* Frey, 1856 and *E. contaminatella* Zeller, 1847. *Elachista juliensis* (Frey, 1870), rejected as unconfirmed by CORLEY (2015b) is included for Portugal, but without data. Their views on *Biselachista* are not followed here. Whether to treat a group of similar species as a subgenus or genus is usually a subjective judgment. In this case the morphological circumscription of *Biselachista* is very clear, but largely based on a single character possibly not of great significance. The authors do not provide sufficient additional evidence for their opinion. It seems best not to change the status quo until such time as DNA-based evidence is available. Furthermore, recognition of *Biselachista* would necessitate reconsideration of the generic position of the four Portuguese species formerly placed in *Cosmiotes* Clemens, 1860. Elsewhere in the Gelechioidea, for example in the large genera *Coleophora* and *Depressaria*, the

relevant character (division of the gnathos into two separate parts) occurs in a few species, but is not currently regarded as worthy of separation at generic level.

SOBCZYK (2015) transfers the monotypic genus *Pygmaeotinea* Amsel, 1957 from Tineidae to Psychidae and finds it to be synonymous with *Eumasia* Chrétien, 1904. The sole species, which is endemic to Portugal, becomes *Eumasia crisostomella* (Amsel, 1957). *Pygmaeotinea* was already retained in Psychidae in CORLEY (2015b).

Acknowledgements

We are grateful to all those who have allowed us to include their records and photographs, to Colin Plant for pointing out the erroneous synonymisation of *Ancylosis albidella* in LERAUT (2014), and to Zdenek Laštůvka, František Slamka, Peter Buchner, Thierry Varenne and Jacques Nel for identifications. We also thank Ernestino Maravalhas for preparing the map. E. M. M. was funded by Portuguese national funds under the FCT - Fundação para a Ciência e a Tecnologia grant SFRH/BD/102801/2014; fieldwork of M. F. V. C. benefitted from funds of EDP Biodiversity Chair.

Appendix: Additions to the Portuguese fauna

Species added to the Portuguese fauna listed in this paper are summarised here, each with a number indicating their placement in the checklist (CORLEY, 2015b). New genera for the Portuguese fauna show the author and year of publication of the genus.

- 0025.1 *Stigmella desperatella* (Frey, 1856)
- 0220.1 *Caloptilia cuculipennella* (Hübner, 1796)
- Atemelia* Herrich-Schäffer, 1853
- 0360.1 *Atemelia torquatella* (Lienig & Zeller, 1846)
- 0441.1 *Agonopterix aspersella* (Constant, 1888)
- 0475.1 *Depressaria velox* Staudinger, 1859
- 0476.1 *Depressaria veneficella* Zeller, 1847
- 0480.1 *Ethmia fumidella* (Wocke, 1850) ssp. *delattini* Agenjo, 1964
- 0521.1 *Syncopacma buvati* Nel, 1995
- 0545.1 *Dichomeris helianthemi* (Walsingham, 1903)
- 0734.1 *Elachista igaloensis* (Amsel, 1951)
- 0744.1 *Haplochrois ochraceella* (Rebel, 1903)
- 0771.1 *Coleophora staeheleinella* Walsingham, 1891
- 0803.1 *Coleophora ononidella* Millière, 1879
- 0901.1 *Neomariania partinicensis* (Rebel, 1937)
- 0935.1 *Stenoptilia pterodactyla* (Linnaeus, 1761)
- 0975.1 *Choreutis pariana* (Clerck, 1759)
- 1030.1 *Cnephasia heinemanni* Obratzsov, 1956
- 1059.1 *Phalonidia affinitana* (Douglas, 1846)
- 1074.1 *Aethes flagellana* (Duponchel, 1836)
- 1080.1 *Cochylidia moguntiana* (Rössler, 1864)
- Orthotaenia* Stephens, 1829
- 1095.1 *Orthotaenia undulana* (Denis & Schiffermüller, 1775)
- 1097.1 *Hedya salicella* (Linnaeus, 1758)
- 1098.1 *Celypha striana* (Denis & Schiffermüller, 1775)
- 1201.1 *Grapholita tenebrosana* (Duponchel, 1843)
- 1206.1 *Pammene gallicolana* (Lienig & Zeller, 1846)
- 1212.1 *Brachodes funebris* (Feisthamel, 1833)
- Heterogenea* Knoch, 1783

- 1255.1 *Heterogenea asella* (Denis & Schiffermüller, 1775)
1506.1 *Acrobasis fallouella* (Ragonot, 1871)
1526 *Ancylosis albidella* (Ragonot, 1888) (*sareptalla* sensu Corley, 2015 *nec* Herrich-Schäffer, 1861)
Hydrelia Hübner, 1825
1882.1 *Hydrelia flammeolaria* (Hufnagel, 1767)
1912.1 *Eupithecia rosmarinata* Dardoin & Millière, 1865
1926.1 *Eupithecia semigraphata* Bruand 1850
2086.1 *Clostera curtula* (Linnaeus, 1758)
Euchalcia Hübner, 1821
2221.1 *modestoides* Poole, 1989
2259.1 *Cucullia reisseri* Boursin, 1933
Meganephria Hübner, 1821
2282.1 *Meganephria bimaculosa* (Linnaeus, 1767)
Lasionycta Aurivillius, 1892
2505.1 *Lasionycta proxima* (Hübner, 1809)
2578.1 *Nola thymula* Millière, 1867
Garella Walker, 1864
2585.1 *Garella nilotica* (Rogenhofer, 1882)

BIBLIOGRAPHY

- CARVALHO, J. PASSOS DE, & CORLEY, M. F. V., 1995.– Additions to the Lepidoptera of Algarve, Portugal.– *SHILAP Revista de lepidopterología*, **23**(91): 191-230.
- CASTROVIEJO, S., 1986-2015.– *Flora Iberica*: **1**: 575 pp., **2**: 897 pp., **3**: 730 pp., **4**: 730 pp., **5**: 320 pp., **6**: 592 pp., **7**: 1119 pp., **8**: 375 pp., **9**: 564 pp., **10**: 498 pp., **11**: 672 pp., **12**: 650 pp., **13**: 677 pp., **14**: 251 pp., **15**: 449 pp., **16**: 734 pp., **17**: 298 pp., **18**: 420 pp., **20**: 651 pp., **21**: 366 pp. Real Jardín Botánico, Madrid.
- CORLEY, M. F. V., 2015a.– The Lepidoptera collections of deceased Portuguese lepidopterists. II.– *Entomologist's Gazette* **66**: 25-49.
- CORLEY, M. F. V., 2015b.– *Lepidoptera of Continental Portugal. A fully revised list*. 288 pp. Martin Corley, Faringdon.
- CORLEY, M. F. V., CARDOSO, J. P., DALE, M. J., MARABUTO, E., MARAVALHAS, E., PIRES, P., 2012.– New and interesting Portuguese Lepidoptera records from 2010. (Insecta: Lepidoptera).– *SHILAP Revista de lepidopterología*, **40**(157): 5-21.
- CORLEY, M. F. V., GARDINER, A. J., CLEERE, N. & WALLIS, P. D., 2000.– Further additions to the Lepidoptera of Algarve, Portugal (Insecta: Lepidoptera).– *SHILAP Revista de lepidopterología*, **28**(111): 245-319.
- CORLEY, M. F. V., MARABUTO, E. & PIRES, P., 2007.– New Lepidoptera for the fauna of Portugal (Insecta: Lepidoptera).– *SHILAP Revista de lepidopterología*, **35**(139): 321-334.
- CORLEY, M. F. V., MARABUTO, E., MARAVALHAS, E., PIRES, P. & CARDOSO, J. P., 2008.– New and interesting Portuguese Lepidoptera records from 2007. (Insecta: Lepidoptera).– *SHILAP Revista de lepidopterología*, **36**(143): 283-300.
- CORLEY, M. F. V., ROSETE, J., MARABUTO, E., MARAVALHAS, E., PIRES, P., 2014.– New and interesting Portuguese Lepidoptera records from 2013. (Insecta: Lepidoptera).– *SHILAP Revista de lepidopterología*, **42**(168): 587-613.
- CORLEY, M. F. V., ROSETE, J., ROMÃO, F., DALE, M. J., MARABUTO, E., MARAVALHAS, E., & PIRES, P., 2015.– New and interesting Portuguese Lepidoptera records from 2014. (Insecta: Lepidoptera).– *SHILAP Revista de lepidopterología*, **43**(172): 583-613.
- KAILA, L., 2015.– The *Elachista dispunctella* (Duponchel) complex (Lepidoptera, Elachistidae) revisited, with exceptional level of synonymy.– *Zootaxa*, **3980**(3): 301-358.
- LAŠTŮVKA, A. & LAŠTŮVKA, Z., 2015.– New records of Lepidoptera from the Iberian Peninsula for 2015 (Insecta: Lepidoptera).– *SHILAP Revista de Lepidopterología*, **43**(172): 633-644.
- LERAUT, P., 2014.– *Moths of Europe. Pyralids 2*, **4**: 440 pp. N. A. P. Editions. Verrières-le-Buisson.
- PARENTI, U. & PIZZOLATO, F., 2015.– Revision of European Elachistidae. The genus *Biselachista* Traugott-

- Olsen & Nielsen, 1977, stat. rev. (Lepidoptera: Elachistidae).– *SHILAP Revista de lepidopterología*, **43**(172): 537-575.
- ROESLER, R. U., 1973.– Phycitinae 1. Trifine Acrobasiina-. In H. G. AMSEL, F. GREGOR & H. REISSER (eds). *Microlepidoptera Palaearctica*, **4**: XVI + 752+ 137 pp., 170 pls. Verlag Georg Fromme & Co, Wien.
- SOBCZYK, T., 2015.– Transfer of *Pygmaeotinea crisostomella* Amsel, 1957 from Tineidae to Psychidae and its taxonomic status (Lepidoptera).– *Nota lepidopterologica*, **38**: 127-131.
- TUTIN, T. G., HEYWOOD, V. H., BURGESS, N. A., MOORE, D. M., VALENTINE, D. H., WALTERS, S. M. & WEBB, D. A., 1964-1980.– *Flora Europaea*, **1**: xxxii + 464 pp., **2**: xxvii + 455 pp., **3**: xxix + 370 pp., **4**: xxix + 505 pp., **5**: xxxvi + 452 pp. Cambridge University Press, Cambridge.

*M. F. V. C.

Pucketty Farm Cottage
Faringdon
GB-Oxfordshire SN7 8JP
GRAN BRETAÑA/ GREAT BRITAIN
E-mail: martin.corley@btinternet.com

y / and

CIBIO

Centro de Investigação em Biodiversidade e Recursos Genéticos
Universidade do Porto
Campus Agrário de Vairão
P-4485-661 Vairão
PORTUGAL / PORTUGAL

J. R.

Urbanização Lourisol
Rua Manuel Cerqueira Nobrega, Lote 16, 2º frente
P-3105-165 Louriçal, Pombal
PORTUGAL / PORTUGAL
E-mail: roseteprof@gmail.com

A. R. G.

Rua do Brasil, 338- 6º D
P-3030-775 Coimbra
PORTUGAL / PORTUGAL
E-mail: anagoncalvesm@gmail.com

J. N.

Rua Padre Miguel Paupério do Vale, 401
P-4440-687 Valongo
PORTUGAL / PORTUGAL
E-mail: joaomiguelfn@sapo.pt

P. P.

6 Epping Court
Highwood Close, East Dulwich
GB-London SE22 8NJ
GRAN BRETAÑA/ GREAT BRITAIN
E-mail: pedromspires@gmail.com

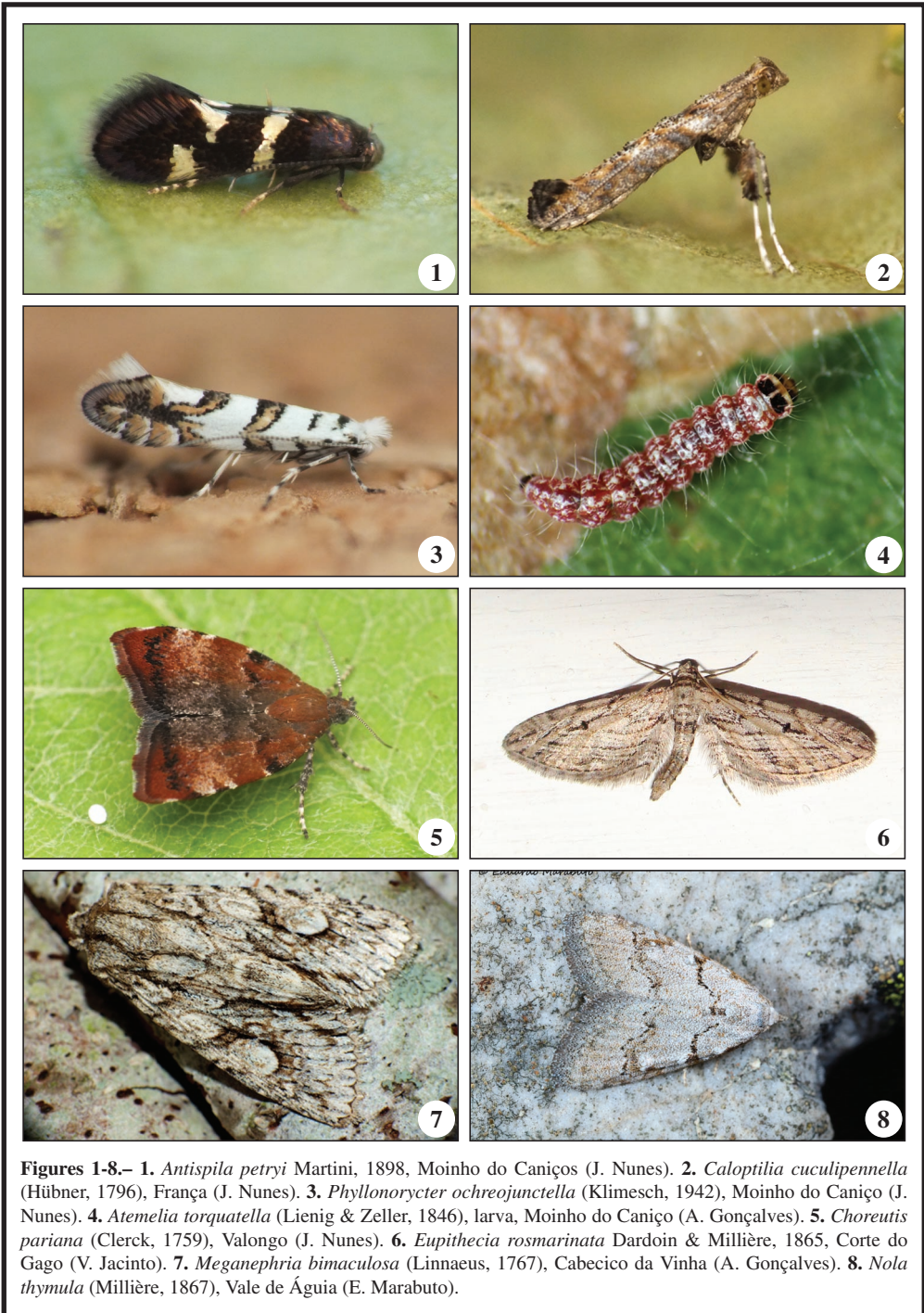
E. M. M.
FCUL/CBA
Computational Biology and Population Genomics Group
Faculdade de Ciências de Lisboa
Edifício C2, sala 2.3.22
Campo Grande
P-1749-016 Lisboa
PORTUGAL / *PORTUGAL*

y / *and*

Rua Maestro Frederico de Freitas, nº 5, 7º dto.
P-1500-399 Lisboa
PORTUGAL / *PORTUGAL*
E-mail: eduardo.marabuto@gmail.com

*Autor para la correspondência / *Corresponding author*

(Recibido para publicación / *Received for publication* 17-X-2016)
(Revisado y aceptado / *Revised and accepted* 9-XI-2016)
(Publicado / *Published* 30-XII-2016)



Figures 1-8.– 1. *Antispila petryi* Martini, 1898, Moinho do Caniços (J. Nunes). 2. *Caloptilia cuculipemella* (Hübner, 1796), França (J. Nunes). 3. *Phyllonorycter ochreojunctella* (Klimesch, 1942), Moinho do Caniço (J. Nunes). 4. *Atemelia torquatella* (Lienig & Zeller, 1846), larva, Moinho do Caniço (A. Gonçalves). 5. *Choreutis pariana* (Clerck, 1759), Valongo (J. Nunes). 6. *Eupithecia rosmarinata* Dardoin & Millière, 1865, Corte do Gago (V. Jacinto). 7. *Meganephria bimaculosa* (Linnaeus, 1767), Cabecico da Vinha (A. Gonçalves). 8. *Nola thymula* (Millière, 1867), Vale de Águia (E. Marabuto).