



SHILAP Revista de Lepidopterología  
ISSN: 0300-5267  
avives@orange.es  
Sociedad Hispano-Luso-Americana de  
Lepidopterología  
España

Corley, M. F. V.; Rosete, J.; Romão, F.; Dale, M. J.; Marabuto, E.; Maravalhas, E.; Pires, P.

New and interesting Portuguese Lepidoptera records from 2014 (Insecta: Lepidoptera)  
SHILAP Revista de Lepidopterología, vol. 43, núm. 172, diciembre, 2015, pp. 583-613  
Sociedad Hispano-Luso-Americana de Lepidopterología  
Madrid, España

Available in: <http://www.redalyc.org/articulo.oa?id=45543699006>

- How to cite
- Complete issue
- More information about this article
- Journal's homepage in redalyc.org

redalyc.org

Scientific Information System  
Network of Scientific Journals from Latin America, the Caribbean, Spain and Portugal  
Non-profit academic project, developed under the open access initiative

## **New and interesting Portuguese Lepidoptera records from 2014 (Insecta: Lepidoptera)**

M. F. V. Corley, J. Rosete, F. Romão, M. J. Dale, E. Marabuto,  
E. Maravalhas & P. Pires

### **Abstract**

38 species are added to the Portuguese Lepidoptera fauna and three species deleted, mainly as a result of fieldwork undertaken by the authors and others in 2014. In addition, second and third records for the country and new food-plant data for a number of species are included. A summary of recent papers affecting the Portuguese fauna is included.

KEY WORDS: Insecta, Lepidoptera, distribution, Portugal.

### **Novos e interessantes registos portugueses de Lepidoptera de 2014 (Insecta: Lepidoptera)**

### **Resumo**

Como resultado do trabalho de campo desenvolvido pelos autores principalmente no ano de 2014, são adicionadas 38 espécies de Lepidoptera para a fauna de Portugal e tres são retiradas da lista nacional. Adicionalmente, são apresentados segundos e terceiros registos de espécies previamente conhecidas além de novas plantas alimentícias para algumas outras espécies. Finalmente, é apresentado um sumário dos trabalhos relevantes para a fauna portuguesa.

PALAVRAS CHAVE: Insecta, Lepidoptera, distribuição geográfica, Portugal.

### **Nuevas e interesantes citas portuguesas de Lepidoptera del 2014 (Insecta: Lepidoptera)**

### **Resumen**

Con el trabajo de campo efectuado por los autores principalmente durante el año 2014, se añaden 38 especies de Lepidoptera a la fauna de Portugal y se eliminan tres especies de la lista nacional. Adicionalmente se presentan segundos y terceros registros de especies ya conocidas del país y también nuevas plantas nutricias de algunas otras especies. Finalmente presentamos un resumen de los trabajos que son relevantes para la fauna portuguesa.

PALABRAS CLAVE: Insecta, Lepidoptera, distribución geográfica, Portugal.

### **Introduction**

This paper gives records of species of Lepidoptera added to the Portuguese fauna in 2014, with

additional data including second and third records of species and sometimes further records, either recent or older, where we consider that a species has been neglected, together with significant extensions of range within Portugal and new data on larval food-plants within the country. Also a few species are included for which the originally published records are erroneous or have not proved possible to confirm and we therefore provide a recent confirmed record.

This paper follows the format established in CORLEY *et al.* (2008). It is the ninth in the series of annual summaries of new knowledge of Portuguese Lepidoptera. Finally, papers and books mainly published in 2014 that relate to the Portuguese Lepidoptera fauna are listed and briefly summarised.

38 species new for Portugal are listed below, of which five are new for the Iberian Peninsula. Five of the species, marked (\*) have been previously listed for Portugal, but the records were erroneous or unsubstantiated. Three species are deleted from the Portuguese fauna.

In CORLEY *et al.* (2014) the number of Lepidoptera species recognised from Portugal was 2614. With the current paper and other papers mentioned herein, this total should have risen substantially. However, a considerable number of species were deleted from the Portuguese list by CORLEY (2015a). This results in a total of 2588 species listed for Portugal in CORLEY (2015b). Future total species for the country will be calculated from this base line.

As in the last two papers a number of species have been noted for which there are a substantial number of records but only two or three have ever been published. This lack of published records is sharply illustrated by the case of *Mirificarma mulinella*, with around 70 records but only one published record. The opportunity has been taken to give a better idea of the distribution of these species by including a selection of records.

The paper also includes an update on current knowledge of the genus *Heterogynis* in Portugal.

Examination of some older collections has produced some second and third records for the country, which are also included here.

## Material and Methods

Most species were captured at mercury vapour light over or beside a white sheet. For specimens not taken at light, the means of capture is given. Specimens are retained in the collections of the original recorders, unless otherwise stated. However, some records are based only on photographic evidence.

The order and nomenclature of families has been revised in accordance with the new Portuguese list (CORLEY, 2015b). The nomenclature of plant names follows CASTROVIEJO (1986-2014) where possible and otherwise follows TUTIN *et al.* (1964-1980).

The entry for species new for Portugal concludes with a summary of the known European distribution, and available information on the larval food plant, given in square brackets if the information comes from outside Portugal.

## Localities with UTM squares and altitude: (District in brackets)

The map below shows the 10x10 km UTM grid squares from which records cited in this paper were made.

Abreiro station (Vila Flor)	PF4478	170 m
Albergaria, Serra do Gerês (Terras de Bouro)	NG7127	700 m
Aldeia Viçosa (Guarda)	PE4291	470 m
Almaceda (Castelo Branco)	PE1429	340 m
Almagreira, Rio Arunca (Pombal)	NE3026	81 m
Almograve (Odemira)	NB1766	10 m
Alvarrões, Serra de São Mamede (Marvão)	PD3758	650 m
Ameijoeira, 0.5 km west of, (Melgaço)	NG6948	715 m

Amieiro, Tua valley (Alijó)	PF3471	150 m
Ansião, 2 km E. of,	NE5019	250 m
Apúlia (Esposende)	NF1992	10 m
Arnal, Serra do Alvão (Vila Real)	NF9976	920 m
Árvore (Vila do Conde)	NF2275	10 m
Assureira, Castro Laboreiro (Melgaço)	NG6950	780 m
Azagães (Oliveira de Azeméis)	NF4927	350 m
Barragem de Santa Luzia (Pampilhosa da Serra)	NE9738	660 m
Barragem da Serra Serrada, Serra de Montesinho (Bragança)	PG8348	1300 m
Barro (Torres Vedras)	MD7724	120 m
Batocas, 1 km S. of, (Sabugal)	PE8282	825 m
Bertandos, 1 km W. of, (Ponte de Lima)	NG2923	6 m
Boliqueime (Loulé)	NB7510	70 m
Brunheda (Carrazeda de Ansiães)	PF3776	160 m
Budens (Vila do Bispo)	NB1504	15 m
Cabecico da Vinha, Freixiosa (Miranda do Douro)	QF2489	600 m
Caldas de Carlão (Murça)	PF3676	215 m
Caldas de Manteigas (Manteigas)	PE2371	850 m
Campanhã (Porto)	NF3655	45 m
Carrazedo, 1 km S.W. of, (Bragança)	PG7425	890 m
Carvalhelhos, Serra do Barroso (Boticas)	PG0516	800 m
Casal de Lóivos (Alijó)	PF2262	390 m
Cascata da Laja, Serra do Gerês (Terras de Bouro)	NG7023	730 m
Cascata da Pedra da Ferida, Espinhal (Penela)	NE5629	450 m
Chão do Ulmeiro, Serra de Sicó (Pombal)	NE3717	350 m
Corte do Gago (Castro Marim)	PB2828	180 m
Costa da Cabrita, Castro Laboreiro (Melgaço)	NG7055	1100 m
Covão da Ametade, Serra da Estrela (Manteigas)	PE1965	1420 m
Covão do Boi, Serra da Estrela (Manteigas)	PE1864	1850 m
Covão do Vidual, Serra da Estrela (Seia)	NF1570	1480 m
Cruz Alta, Mata de Buçaco (Mealhada)	NE5469	540 m
Cruzinha, Mexilhoeira Grande (Portimão)	NB3411	20 m
Esculca, Beça (Boticas)	PG0815	790 m
Escusa (Marvão)	PD3762	550 m
Faia Brava, Algodres (Figueira de Castelo Rodrigo)	PF6133	450 m
Falorca, Serra de Caramulo (Tondela)	NE7188	280 m
Ferragudo (Portimão)	NB4208	20 m
Figueiró do Campo (Soure)	NE3644	35 m
Fóios, Malcata (Sabugal)	PE7759	950 m
Formigais (Ourém)	ND4892	90 m
Frades (Montalegre)	NG9430	920 m
Francelos (Vila Nova de Gaia)	NF2948	25 m
Freixo de Numão (Vila Nova de Foz Côa)	PF4848	480 m
Fresulfe (Vinhais)	PG7140	650 m
Galegos (Marvão)	PD4461	470 m
Galiza, Lagoa de Santo André (Santiago de Cacém)	NC1913	15 m
Gavião	ND9169	230 m
Gerês (Terras de Bouro)	NG7020	440 m
Gondesende (Bragança)	PG7734	790 m
Guarda	PE48	850 m
Ilha da Culatra (Faro)	PA0395	4 m
Ilha da Murraceira (Figueira da Foz)	NE1542	3 m
Lagoa da Ervideira, Pedrogão (Leiria)	NE0820	55 m
Lagoa de Santo André (Santiago de Cacém)	NC1914	14 m
Lama Grande, Serra de Montesinho (Bragança)	PG8346	1390 m

Lamas de Olo (Vila Real)	NF9981	970 m
Lapa dos Dinheiros (Seia)	PE0970	740 m
Louredo (Arcos de Valdevez)	NG4642	120 m
Louriçal (Pombal)	NE2228	40 m
Malhada da Figueira, N. of Santa Rita (Tavira)	PB2619	125 m
Marco, Esperança (Arronches)	PD5838	375 m
Marmeleira (Rio Maior)	ND1346	30 m
Marvão	PD3962	830 m
Mata do Buçaco (Mealhada)	NE5370	270 m
Mata do Urso (Pombal)	NE0924	25 m
Matança (Fornos de Algodres)	PF2506	580 m
Mindelo (Vila do Conde)	NF2274	5 m
Minhota (Marvão)	PD3863	650 m
Moimenta (Vinhais)	PG6746	900 m
Moinho do Caniço, Ponte de Castrelos (Bragança)	PG7534	600 m
Moledo do Minho (Caminha)	NG1233	12 m
Monte Alto, Sargaçal (Lagos)	NB2811	70 m
Monte Barata (Castelo Branco)	PD4496	230 m
Monte Clérigo (Aljezur)	NB1333	20 m
Montesinho, 2 km N. of village (Bragança)	PG8547	1220 m
Montouto (Vinhais)	PG6643	1010 m
Paialvo (Tomar)	ND4679	100 m
Parâmio (Vinhais)	PG7740	860 m
Parque Biológico de Gaia (Vila Nova de Gaia)	NF3650	110 m
Parque da Cidade, Porto	NF2657	20 m
Pêro Soares (Guarda)	PE4189	730 m
Petisqueira (Bragança)	QG0638	630 m
Poço do Inferno, Serra da Estrela (Manteigas)	PE2570	1100 m
Podre, Castro Laboreiro (Melgaço)	NG6850	800 m
Ponte de Cabaços, Serra da Estrela (Seia)	PE1875	1340 m
Ponte de Castrelos (Bragança)	PG7433	640 m
Ponte de Parâmio (Vinhais)	PG7840	770 m
Ponte do Couço, Rio Tuela, east of Moimenta (Vinhais)	PG 6946	750 m
Ponte do Rio Maceira, Serra do Gerês (Terras de Bouro)	NG7127	650 m
Portas do Rodão (Nisa)	NF3609	150 m
Porto do Sabor (Bragança)	PG8148	1265 m
Praia do Samouco (Marinha Grande)	NE0007	6 m
Quinta da Maúña (Guarda)	NE4992	890 m
Quinta da Taberna (Guarda)	PE3382	800 m
Regato da Videira albufeira, Prada (Vinhais)	PG6736	930 m
Ribeira da Azenha (Fundão)	PE3351	490 m
Ribeira de Limas (Serpa)	PB2187	85 m
Salema (Vila do Bispo)	NB1513	60 m
Salreu (Murtosa)	NF3609	3 m
Santa Clara (Coimbra)	NE4650	80 m
São Julião Igreja (Portalegre)	PD4753	500 m
São Lourenço (Carrazeda de Ansiães)	PF3672	160 m
São Mamede, Serra de São Mamede (Portalegre)	PD4052	810 m
São Miguel (Lousada)	NF6373	260 m
São Romão (Seia)	PE0972	570 m
São Vicente da Beira (Castelo Branco)	PE2233	550 m
Sardeira (Lousã)	NE6838	680 m
Segura (Idanha-a-Nova)	PE7209	167 m
Serra da Lousã (Lousã)	NE6635	880 m
Serra da Pedra Torta, Hortas de Baixo (Arronches)	PD5935	295 m

Serra de Castelo de Vide (Castelo de Vide)	PD3363	700 m
Sobral da Adiça (Moura)	PC5111	190 m
Soutelo (Bragança)	PG8239	925 m
Trilho da Rota das Faias (Manteigas)	PE2675	1080 m
Trinta, by Rio Mondego, Serra da Estrela (Guarda)	PE3785	750 m
Vairão (Vila do Conde)	NF2775	95 m
Vale de Rosal (Almada)	MC8379	60 m
Vale de Zêzere, 2.5 km S.W. of Manteigas	PE2370	1030 m
Valinhas, Monte Córdova (Santo Tirso)	NF4673	280 m
Valongo	NF4159	200 m
Vila Franca (Viana do Castelo)	NG2115	5 m
Vilarinho das Azenhas (Vila Flor)	PF5083	190 m
Zambujeira do Mar (Odemira)	NB1853	20 m

### Recorders

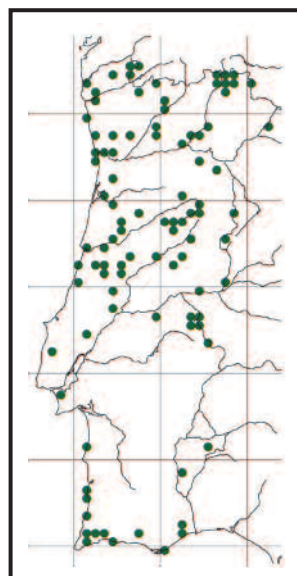
Rui Andrade	Thomas Merckx
Bert Van der Auwermeulen	Nicholas Montegriffo
† João Pedro Cardoso	Erik van Nieuwerkerken
Ricardo Carvalho	João Nunes
Rita Carvalho	Pedro Pires
Martin Corley	Vlad Proklov
Mike Dale	Fernando Romão
Isaías Ferreira	Jorge Rosete
Sónia Ferreira	Carlos Silva
Ana Rita Gonçalves	† Maria Amália da Silva Cruz
José Manuel Grosso-Silva	Peder Skou
Valter Jacinto	Pedro Sousa
Edmundo Jesus	Gerry Tremewan
Eduardo Marabuto	Ana Valadares
Ernestino Maravalhas	
† Cândido Mendes de Azevedo	

### Abbreviations and symbols

coll.	collection
conf.	confirmed by
det.	determined by
IZPC	Natural History Museum of the Sciences Faculty of Porto
ZMCP	Museu de Zoologia, Universidade de Coimbra
*	New for Portugal
(*)	New for Portugal, but has previously been listed erroneously or questionably.
**	New for the Iberian Peninsula.

### Provinces:

AAL	Alto Alentejo	DL	Douro Litoral
ALG	Algarve	E	Estremadura
BA	Beira Alta	M	Minho
BAL	Baixo Alentejo	R	Ribatejo
BB	Beira Baixa	TM	Trás-os-Montes
BL	Beira Litoral		



## List of families and species

### NEPTICULIDAE

*Stigmella sakhalinella* Puplesis, 1984

Second record. BA: Covão de Ametade, larvae mining *Betula pubescens*, 16-X-2014, Corley. Previously recorded from Trás-os-Montes (LAŠTŮVKA & LAŠTŮVKA, 2014d).

\*\**Stigmella catharticella* (Stainton, 1853)

TM: Ponte de Castrelos, larvae mining *Rhamnus catharticus*, 11-X-2014, Corley. Middle latitudes of Europe, north to Finland and south to Bulgaria (CORLEY, 2015b).

*Stigmella minusculella* (Herrich-Schäffer, 1855)

Second Portuguese record. DL: Valongo, leaf mine on *Pyrus communis*, 14-X-2014, Nunes, det. Corley. Previously recorded from Algarve (LAŠTŮVKA & LAŠTŮVKA, 2009).

*Stigmella aurella* (Fabricius, 1775)

DL: Larva mining leaf of *Rubus idaeus*, 27-VII-2014, adult reared 13-VIII-2014, Valongo, Nunes. According to NIEUKERKEN *et al.* (2004), the species had never been confirmed in Portugal by rearing. Leaf mines of this species and *S. auromarginella* can be confused.

*Stigmella incognitella* (Herrich-Schäffer, 1855)

Second record. DL: Valongo, leafmine on *Malus*, XI-2014, Nunes. Previously recorded from Beira Alta (NIEUKERKEN *et al.*, 2004).

### ADELIDAE

*Nemophora barbatellus* (Zeller, 1847)

ALG: Corte do Gago, IV-2014, Jacinto, det. Kozlov from photo.

\**Adela mazzolella* (Hübner, 1801)

TM: Ponte de Castrelos, flying in sunshine over *Erysimum linifolium*, 5-VI-2005, Corley, det. Kozlov by barcoding. This species normally has an incomplete whitish fascia, but Portuguese specimens are without markings. Scattered through south and south central Europe, north to the Czech Republic. [*Erysimum marschallianum*].

### PSYCHIDAE

*Bankesia conspurcatella* (Zeller, 1850)

Third and fourth records. BL: Figueiró do Campo, 4-III-2014, I. Ferreira, det. Corley; DL: Campanhã, 8-III-2014, Nunes, conf. Corley. Previously recorded from Beira Litoral and Douro Litoral (CORLEY *et al.*, 2013).

\**Placodoma veletaella* Sobczyk, 2013

AAL: Portas do Rodão, 7-VII-2014, Rosete, det. Arnscheid. Previously known only from the holotype from Sierra de Nevada, Spain. Larva unknown.

### TINEIDAE

*Tenaga nigripunctella* (Haworth, 1828)

First confirmed record. BL: Louriçal, 14-IX-2014, Rosete, det. Corley. Previously recorded from

Beira Baixa (MENDES, 1905) and Douro Litoral (AMSEL, 1957) but the records have not been confirmed and might refer to *T. rhenania* which was not described until 1962. Also recorded from Algarve (CORLEY, 2005) but this was a misidentification of *T. rhenania* (CORLEY *et al.*, 2014).

*Eudarcia alberti* (Amsel, 1957)

Third locality. E: Barro, 15-VI, Mendes (ZMCP), det. Corley. Previously recorded from two localities in Douro Litoral (MONTEIRO, 1957).

*Infurcitinea monteiroi* Amsel, 1957

Second and third localities for this endemic species. BL: Sardeira, cases on lichen (*Leprocaulon microscopicum*), 22-XI-2009; adults on the lichen by day, 29-VI-2014, Corley; BA: Guarda, in house, V-2014, Romão, det. Corley. Previously recorded from the type locality in Douro Litoral (AMSEL, 1957).

\**Nemapogon variatella* (Clemens, 1859)

BA: Poço do Inferno, 12-VI-2014, Romão, det. Corley. Almost all Europe except the Mediterranean islands. [Larva on various polyporous and other fungi].

*Tinea murariella* Staudinger, 1859

Third and fourth records. AAL: Escusa, 4-VI-1996, Corley; TM: Freixo de Numão, 21-IX-2004, Corley. Previously recorded from Douro Litoral (ROBINSON, 1979) and Beira Litoral (PIRES & CORLEY, 2007).

*Tinea translucens* Meyrick, 1917

Second locality. BL: Lourçal, 1-IX-2014, Rosete, det. Corley. Previously recorded from Algarve (CORLEY *et al.*, 2000).

#### BUCCULATRICIDAE

*Bucculatrix frangutella* (Goeze, 1783)

Third and subsequent records. BB: Barragem de Santa Luzia, larval signs on *Frangula alnus*, 15-X-2014, Corley; DL: Parque Biológico de Gaia, larval signs on *Frangula alnus*, 5-X-2008, Corley; M: Vila Franca, 15-V-2006, Corley; TM: Ponte de Castrelos, larval signs on *Rhamnus catharticus*, 11-X-2014, Corley. Previously recorded from Alto Alentejo (CORLEY *et al.*, 2006) and Beira Litoral (PIRES & CORLEY, 2007).

#### GRACILLARIIDAE

\**Acrocercops cocciferellum* (Chrétien, 1910)

BL: Ansião, larvae mining *Quercus coccifera*, 18-X-2014, Corley, det. Nunes, conf. Z. Laštůvka. MENDES' (1910a) description of larvae of *A. brongiardiella* feeding on *Quercus coccifera* at Torres Vedras evidently refers to this species. The record of *brongiardiella* from Algarve (CORLEY, 2005) also belongs here. Spain, France, Greece.

*Parornix tenella* (Rebel, 1919)

Third record. BL: Santa Clara, 9-IX-2006, Corley and Pires. Recently recorded from two localities in Trás-os-Montes (LAŠTŮVKA & LAŠTŮVKA, 2014d).

*Parornix torquillella* (Zeller, 1850)

Extension of range. AAL: Marvão, spinings on *Prunus domestica*, 9-IX-1996, Corley; Ansião, 13-IV-2014, Rosete, det. Corley; DL: Valongo, larva on *Prunus domestica*, 10-V-2014, Nunes, det.



Corley; TM: Fresulfe, larvae on *Prunus spinosa*, 25-IX-2005, Corley. Previously recorded from two localities in Algarve (CORLEY *et al.*, 2000) and from Beira Baixa (MARABUTO *et al.*, 2013).

*Phyllonorycter roboris* (Zeller, 1839)

Extension of range. BL: Santa Clara, 9-IX-2006, Corley and Pires; BA: São Romão, 5-X-2014, Gonçalves; DL: Valinhas, 7-IX-2006, Corley. Previously recorded from several localities in Beira Baixa (MENDES, 1905).

*Phyllonorycter barbarella* (Rebel, 1901)

Third record. BA: Poço do Inferno, 12-VI-2014, Romão, det. Corley. Previously recorded from Beira Alta (VIVES MORENO, 1994) and Minho (LAŠTŮVKA & LAŠTŮVKA, 2014d).

(\*) *Phyllonorycter spinicolella* (Zeller, 1846)

ALG: Boliqueime, 5-VI-2008, Dale. Recently removed from the Portuguese list (CORLEY, 2015a) as the earlier record from Beira Baixa (MENDES, 1905) was based on misidentified material of *P. cerasicolella* (Herrich-Schäffer, 1855). Probably almost all Europe, but has until recently been considered synonymous with *P. cerasicolella*, leaving the distributions of both species confused. [*Prunus spinosa*, *P. domestica*, *P. cerasifera*, *P. padus*].

*Phyllonorycter lautella* (Zeller, 1846)

Second record. BL: Cruz Alta, 21-VII-2014, Pires, det. Corley. Previously recorded from Douro Litoral (AMSEL, 1959).

*Phyllonorycter alnivorella* (Ragonot, 1875)

Extension of range. M: Vila Franca, 15-V-2006, Corley; TM: Vilarinho das Azenhas, 25-VII-2006, Corley. Also reared from leafmines on *Alnus glutinosa*: AAL: Galegos, 15-IV-1997, Corley; R: Paialvo, 7-VIII-2014, Gonçalves; DL: Parque da Cidade, 14-VIII-2014, Nunes; TM: Carvalhelhos, 25-VII-2001, Nieuwerkerken. Previously recorded from Beira Baixa (MENDES, 1910) and Algarve (CORLEY *et al.*, 2000).

*Phyllonorycter populifoliella* (Treitschke, 1833)

Second to fourth records. TM: Abreiro station, 22-VII-2006, Corley. Also leafmines on *Populus nigra*: TM: Brunheda, 21-VII-2006, Corley; DL: Lousada, 28-VIII-2014, Ricardo Carvalho. Previously recorded from Beira Baixa (CORLEY *et al.*, 2006).

*Ypsolopha lucella* (Fabricius, 1775)

Third and fourth records. TM: Arnal, 2-IX-2002, Corley; Gondesende, 2-VII-2014, Corley. Previously recorded from Beira Baixa (MENDES, 1905) and Beira Alta (CORLEY, 2002).

#### GLYPHIPTERIGIDAE

*Orthotelia sparganella* (Thunberg, 1788)

Third and fourth localities. DL: Mindelo, 8-VII-2014, Corley, Nunes and Silva; BA: Matança, 17-VII-2014, Romão, det. Corley. Previously recorded from Baixo Alentejo (CORLEY, 2004) and Algarve (CORLEY, 2005).

#### ARGYRESTHIIDAE

*Argyresthia goedartella* (Linnaeus, 1758)

Second and subsequent records. BA: Covão da Ametade, 14-VIII-2001, Nieuwerkerken; TM:

Montesinho, 9-VII-2009, Corley; Gondesende, 3-IX-2013, Corley. Previously recorded from Beira Alta (MENDES, 1913).

*Argyresthia glaucinella* Zeller, 1839

Third record. BL: Cruz Alta, 21-VII-2014, Pires, det. Corley. Previously recorded from Beira Alta and Trás-os-Montes (CORLEY *et al.*, 2011).

\**Argyresthia albistria* (Haworth, 1828)

TM: Carrazedo, 5-VII-2014, Corley. Almost all Europe except the far north and becoming local in the south. [*Prunus spinosa*, *P. avium*].

#### LYONETIIDAE

*Leucoptera malifoliella* (Costa, 1836)

Second and subsequent records. AAL: Alvarões, leaf mines on *Malus*, 4-VI-1997, Corley; M: Cruz do Gerês, leaf mines on *Pyrus cordata*, 17-IX-2003, Corley; TM: Barragem da Serra Serrada, leaf mines on *Sorbus aucuparia*, 26-IX-2005, Corley; Gondesende, leaf mine on *Malus*, 11-X-2014, Corley. Previously recorded from Estremadura (MENDES, 1910a).

#### PRAYDIDAE

*Prays fraxinella* (Bjerkander, 1784)

Second to fourth records. BA: Pêro Soares, 23-VIII-2014, Romão; Trinta, 24-VIII-2014, Romão; TM: Freixo de Numão, 1-VI-2005, Corley. Previously recorded from Trás-os-Montes (STAINTON, 1881).

#### SCYTHROPIIDAE

\**Scythropia crataegella* (Linnaeus, 1767)

TM: Carrazedo, 5-VII-2014, Corley. Almost all Europe except the far north and becoming local in the south. [*Crataegus*, *Cotoneaster*, *Prunus spinosa*].

#### AUTOSTICHIDAE

*Symmoca alhambrella* Walsingham, 1911

Extension of range. ALG: Malhada da Figueira, 7-VIII-2011, Montegriffo, det. Corley; BAL: Sobral da Adiça, 5-VI-2008, Corley and Marabuto; BA: Faia Brava, 27-VIII-2011, Marabuto and Romão, det. Corley; TM: Carrazedo, 5-VII-2014, Corley. Previously recorded from Alto Alentejo (CORLEY *et al.*, 2006) and two localities in Beira Baixa (MARABUTO *et al.*, 2013).

#### OECOPHORIDAE

*Goidanichiana jourdheuillega* (Ragonot, 1875)

Extension of range. DL: Parque Biológico de Gaia, 9-VI-2008, Corley; M: Apúlia, 17-V-2006, Corley; TM: Lama Grande, 10-VII-2009, Corley; Caldas de Carlão, 31-VII-2014, Pires and Romão. Previously recorded from Algarve (CORLEY *et al.*, 2000), Beira Alta (CORLEY, 2002) and Beira Litoral (PIRES & CORLEY, 2007).

\**Endrosis sarcitrella* (Linnaeus, 1758)

BL: Lourical, in garage, 18-IV-2014, 25-V-2014, Rosete, det. Corley. All Europe except some

Mediterranean islands. [Larva on dry material, often of animal origin, including stored foodstuffs, wool, dead insects etc.].

*Hofmannophila pseudospretella* (Stainton, 1849)

Second to fifth records. BL: Praia do Samouco, 4-VII-2014, Rosete; DL: Parque Biológico de Gaia, 9-VI-2008, Corley; M: Apúlia, no date, Silva Cruz (IZPC); TM: Montouto, 28-VII-2001, Nieukerken. Previously recorded from Trás-os-Montes (AMSEL, 1959).

#### DEPRESSARIIDAE

*Agonopterix ocellana* (Fabricius, 1775)

Second and subsequent records. BL: Serra da Lousã, 19-V-2007, Corley, Pires and Marabuto; DL: Azagães, 15-VIII-1928, det. Corley (Monteiro collection); M: Bertiandos, 26-VI-2012, 19-X-2014, Corley. Previously recorded from Douro Litoral (CORLEY *et al.*, 2007).

*Agonopterix arenella* (Denis & Schiffermüller, 1775)

Third record. M: Podre, larva on *Centaurea nigra*, 30-VI-2014, Corley. Previously recorded from two localities in Trás-os-Montes (CORLEY *et al.*, 2007).

*Depressaria ululana* Rössler, 1866

Second record. BA: Poço do Inferno, parasitised larvae on *Conopodium majus*, 6-VII-2014, Corley and Romão. Previous record of adult from same locality (CORLEY, 2015a).

*Anchinia cristalis* (Scopoli, 1763)

Second record. TM: Carrazedo, 5-VII-2014, Corley. Previously recorded from Trás-os-Montes (CORLEY *et al.*, 2011).

*Ethmia aurifluella* (Hübner, 1810)

Extensions of range. ALG: Monte Alto, 8-IV-2014, Valadares, det. Corley; DL: Vila Nova de Gaia, VII-1960, Silva Cruz (IZPC); M: Gerês, 2-VII-1935, Silva Cruz (IZPC). Previously recorded from several localities in Estremadura, see CORLEY *et al.* (2009).

#### COSMOPTERYGIDAE

*Anatrachyntis badia* (Hodges, 1962)

Second record. ALG: Budens, 24-VII-2014, Pires, det. Corley. Previously recorded from Algarve (CORLEY *et al.*, 2012b).

\**Eteobalea isabellella* (O. Costa, 1836)

TM: Carrazedo, 5-VII-2014, Corley. Spain, France, Corsica, Sicily, Italy, south-east Europe from Hungary southwards. Larva unknown.

#### GELECHIIDAE

*Stomopteryx remissella* (Zeller, 1847)

Extension of range. BL: Cascata da Pedra da Ferida, 15-VII-2013, Rosete, det. Corley; TM: Amieiro, 23-VII-2006, Corley. Previously recorded from Algarve (CORLEY *et al.*, 2000), Baixo Alentejo (CORLEY, 2004) and Beira Baixa (MARABUTO *et al.*, 2013).

*Syncopacma azosterella* (Herrich-Schäffer, 1854)

Second and subsequent records. BB: Segura, 14-VII-2007, Corley; BA: Covão do Boi, 24-VI-

2010, Corley; TM: Esculca, larvae on *Adenocarpus*, 20-VI-2012, Corley; Montesinho, larvae on *Adenocarpus*, 4-VII-2014, Corley. The species was added to the Portuguese fauna by BIDZILYA & KARSHOLT (2013) based on MENDES' (1904) record of *Anacampsis vorticella* from Beira Baixa.

*Syncopacma captivella* (Herrich-Schäffer, 1854)

Extension of range. AAL: Galegos 12-IV-1997, Corley; BA: Poço do Inferno, 12-VII-2009, Corley; TM: Montouto, 30-VII-2001, Nieuwerkerken, det. Corley; Abreiro station, 3-VI-2008, Corley. Previously recorded from Algarve (CORLEY *et al.*, 2000) and Beira Baixa (MARABUTO *et al.*, 2013).

\**Mesophleps ochracella* (Turati, 1926)

ALG: Mexilhoeira Grande, 24-III-2011, Van der Auwermeulen, det. Karsholt. Spain, France, Balearic Islands, Malta, Greece including Crete. Larva unknown.

*Nothris congressariella* (Bruand, 1858)

Third and subsequent records. AAL: Escusa, 12-III-1996, larva on *Scrophularia scorodonia*, Corley; BA: Falorca, Silva Cruz, det. Corley (IZPC); TM: Ponte de Castrelos, 11-X-2014, Corley and Silva. Previously recorded from Algarve (CORLEY *et al.*, 2000) and Baixo Alentejo (CORLEY, 2004).

Delete *Anarsia bilbainella* (Rössler, 1877)

Recorded from DL: Valinhas, 6-X-2008 Corley (CORLEY *et al.*, 2009), but the specimen is now thought to be just a pale form of *A. spartiella*. There are no other records.

(\*) *Bryotropha umbrosella* (Zeller, 1839)

BL: Mata do Urso, 2-V-2014, Rosete, det. Corley. Previously listed for Portugal by VIVES MORENO (1992), but no record traced and given by KARSHOLT & RUTTEN (2005) as in need of confirmation. Much of Europe but absent from the Mediterranean islands, Italy and some countries in south-east Europe. [Larva on mosses].

\**Isophrictis meridionella* (Herrich-Schäffer, 1854)

TM: Parâmio, 3-VI-2005, Corley; Vale de Água, 8-V-2007, Corley. Spain, France, Sardinia. Larva unknown.

*Isophrictis striatella* ([Denis & Schiffermüller], 1775)

ALG: Cruzinha, 28-IV-2011, Van der Auwermeulen, det. Corley. Earliest records E: Setúbal, VI. Vieilledent (VIEILLEDENT, 1905), E: Cadriceira, VII. Mendes (MENDES, 1910a) are unconfirmed. Also recorded previously from Algarve (CORLEY *et al.*, 2000), but some specimens that have been re-examined are *I. anthemidella* or *I. corsicella*.

\**Isophrictis corsicella* Amsel, 1936

BAL: Galiza, Lagoa de Santo André, 1-VI-1997, Corley (Record previously published as *I. striatella* in CORLEY, 2004); AAL: Castelo de Vide, 10-V-1999, Corley. Spain, France, Corsica, Sardinia. Larva unknown.

\**Metzneria artificella* (Herrich-Schäffer, 1861)

ALG: Boliqueime, 19-IV-2011 and 2-V-2011, Dale. Spain, France, Italy and Switzerland to Hungary and Bulgaria. [*Echinops*].

*Apodia bifractella* (Duponchel, 1843)

Extension of range. AAL: Escusa, 3-VI-1996, Corley; R: Marmeleira, 12-IX-2002, Corley; BL:

Figueiró do Campo, 22-V-2014, Ferreira, det. Corley. Previously recorded from Estremadura (VIEILLEDENT, 1905) and Algarve (CARVALHO & CORLEY, 1995; CORLEY *et al.*, 2000).

*Eulamprotes unicolorella* (Duponchel, 1843)

Second record. BL: Ansião, 13-IV-2014, Rosete, det. Corley. Previously recorded from Trás-os-Montes (CORLEY *et al.*, 2007).

*Neofriseria singula* (Staudinger, 1876)

Second and subsequent records. AAL: Portas do Rodão, 7-VII-2014, Rosete, det. Corley; TM: Montouto, 29-VII-2001, Nieuwerkerken, det. Corley; Esculca, 23-IX-2003, Corley, Marabuto and Pires, Amieiro, 10-IX-2006, Corley. Previously recorded from Baixo Alentejo (CORLEY *et al.*, 2006).

*Sophronia semicostella* (Hübner, 1813)

Third record. TM: Porto do Sabor, 4-VII-2014, Corley and Maravalhas. Previously recorded from two localities in Beira Alta (CORLEY *et al.*, 2008; 2012a).

*Sophronia humerella* (Denis & Schiffmüller, 1775)

Extension of range. AAL: Galegos, 3-VI-1996, Corley; R: Marmaleira, 12-IX-2002, Corley; BL: Almagreira, 25-VI-2013, Rosete, det. Corley; BB: Alameda, 5-VIII-2011, Pires, det. Corley; BA: Aldeia Viçosa, 7-VI-2009, Romão, det. Corley; TM: Freixo de Numão, 1-VI-2005, Corley; Gondesende, 2-VII-2014, Corley. Previously recorded from Algarve (CARVALHO & CORLEY, 1995; CORLEY *et al.*, 2000).

*Mirificarma mulinella* (Zeller, 1839)

Second and subsequent records. AAL: Galegos, 19-X-1997, Corley; BL: Lagoa da Ervideira, 11-IX-2013, Rosete, det. Corley; BA: Covão da Ametade, 13-VIII-2001, Nieuwerkerken, det. Corley; DL: Parque Biológico de Gaia, 5-X-2008, Corley; M: Albergaria, 16-IX-2003, Corley; TM: Lamas de Olo, larvae on flowers of *Cytisus*, 24-V-2003, Corley and Pires; Lama Grande, 4-IX-2013, Corley. Previously recorded from Algarve (CARVALHO & CORLEY, 1995).

*Chionodes fumatella* (Douglas, 1850)

Second record. TM: Caldas de Carlão, 31-VII-2014, Pires and Romão, det. Corley. Previously recorded from Trás-os-Montes (CORLEY *et al.*, 2012b).

*Scrobipalpa salinella* (Zeller, 1847)

Extension of range. BL: Ilha da Murraceira, 28-VI-2014, Corley and Rosete. Previously recorded from three localities in Algarve (CORLEY *et al.*, 2000; CORLEY, 2005).

*Tuta absoluta* (Meyrick, 1917)

Extension of range. BL: Monte de Santa Olaia, 14-XI-2012, Rosete, det. Corley; DL: Mindelo, 13-X-2014, Corley and S. Ferreira; M: Francelos, larvae on *Lycopersicum*, 22-VIII-2014, Nunes, det. Corley; TM: Amieiro, 14-X-2011, Corley. Previously recorded from Algarve (HUEMER & KARSHOLT, 2010) and Baixo Alentejo (CORLEY *et al.*, 2012a).

\**Klimeschiopsis terroris* (Hartig, 1938)

BB: Monte Barata, 13-V-2005, Pires, det. Karsholt. Spain. Larva unknown.

*Caryocolum alsinella* (Zeller, 1868)

Extension of range. BA: Lapa dos Dinheiros, 29-VII-2014, Pires, det. Corley. Previously recorded from Trás-os-Montes and Minho, see CORLEY *et al.* (2013).

*Caryocolum provinciella* (Stainton, 1869)

Extension of range. BL: Praia do Samouco, 24-IX-2014, Rosete, det. Corley; DL: Mindelo, 26-IX-2008, Corley. Previously recorded from three localities in Algarve (CARVALHO & CORLEY, 1995; CORLEY *et al.*, 2000).

*Caryocolum schleichi* (Christoph, 1870)

Second and subsequent records. AAL: Serra de Castelo de Vide, galls on *Dianthus lusitanus*, 19-IV-2000, Corley; Portas do Rodão, 7-VII-2014, Rosete, det. Corley; BL: Sardeira, galls on *Dianthus lusitanus*, 19-V-2007, Corley; TM: Casal de Lóivos, 21-IX-2004, Corley; Petisqueira, 7-IX-2002. Previously recorded from Beira Alta (CORLEY, 2002).

*Caryocolum marmorea* (Haworth, 1828)

Third and subsequent records. AAL: Escusa, 5-VI-1996, Corley; BA: Covão do Boi, 24-VI-2010, Corley; Guarda, 20-VII-2014, Romão, det. Corley; TM: Amieiro, 30-IX-2008, Corley. Previously recorded from Beira Baixa (MENDES, 1904) and Algarve (CORLEY, 2005).

(\*) *Caryocolum arenbergeri* Huemer, 1989

BA: Ponte de Cabaços, 1-IX-2013, Corley and Romão. Previously recorded from BA: Caldas de Manteigas (CORLEY, 2002b) but this was a misidentification of *C. jaspidella* (CORLEY *et al.*, 2011). Spain. Larva unknown.

\**Teleiodes italica* Huemer, 1992

TM: Gondesende, 8-VII-2009, 2-VII-2014, Corley. Spain, France, Switzerland, Italy. [*Crataegus laevigata*].

*Teleiodes luculella* (Hübner, 1813)

Third to sixth records. BA: Poço do Inferno, 23-VI-2010, Corley; DL: Parque Biológico de Gaia, 9-VI-2008, Grosso-Silva, det. Corley; M: Podre, 30-VI-2014, Corley; TM: Ponte do Couço, 2-VI-2005, Corley. Previously recorded from Alto Alentejo (CORLEY *et al.*, 2006) and Beira Litoral (PIRES & CORLEY, 2007).

*Neotelphusa huemeri* (Nel, 1998)

Second and subsequent records. AAL: Minhota, larvae on *Cistus psilosepalus*, 14-IV-1997, Corley; BA: Covão da Ametade, 13-VIII-2001, Nieuwerkerken, det. Corley; TM: Arnal, larvae on *Halimium*, 24-V-2003, Corley; Petisqueira, 7-IX-2002, Corley. Previously recorded from Algarve (CORLEY *et al.*, 2000).

*Carpatolechia decorella* (Haworth, 1812)

Extension of range. AAL: Escusa, 21-X-1997, Corley; BL: Ansião, 20-XII-2012, Rosete, det. Corley; BB: Ribeiro da Azenha, 5-IX-2006, Sousa, det. Corley; BA: Caldas de Manteigas, 22-IX-2004, Corley; TM: Gondesende, 21-III-2011, Corley. Previously recorded from two localities in Algarve (CORLEY *et al.*, 2000) and from Trás-os-Montes (CORLEY *et al.*, 2008).

*Pseudotelphusa scalella* (Scopoli, 1763)

Third to fifth records. BA: Guarda, 20-VII-2014, Pires and Romão, det. Corley; M: Vila Franca, 15-V-2006, Corley; TM: Gondesende, 21-V-2009, Corley. Previously recorded from Estremadura (CORLEY *et al.*, 2006) and Beira Litoral (PIRES & CORLEY, 2007).

\*\**Parachronistis albiceps* (Zeller, 1839)

M: Podre, 30-VI-2013 Corley; TM: Gondesende, 2-VII-2014, Corley. Middle latitudes of Europe,

absent from parts of the south-east and most Mediterranean islands. [*Corylus avellana*] (CORLEY, 2015b).

#### ELACHISTIDAE

*Elachista fuscibasella* Chrétien, 1915

Second locality. TM: Caldas de Carlão, 31-VII-2014, Pires and Romão. Previously recorded from Algarve (CARVALHO & CORLEY, 1995).

\*\**Elachista utonella* Frey, 1856

TM: Carracedo, 5-VII-2014, Corley. Central and northern Europe, absent from several countries in southern Europe. [*Carex* spp.] (CORLEY, 2015b).

*Elachista contaminatella* Zeller, 1847

Third and subsequent records. AAL: Serra da Pedra Torta, 5-VI-1997, Corley; R: Marmeleira, 12-IX-2002, Corley; DL: Mindelo, 31-V-2005; 13-X-2006, Corley; M: Vila Franca, 15-V-2006, Corley. Previously recorded from Algarve (CORLEY *et al.*, 2000) and Beira Baixa (MARABUTO *et al.*, 2013).

#### COLEOPHORIDAE

\*\**Coleophora saturatella* Stainton, 1850

M: Podre, 30-VI-2014, Corley; Costa da Cabrita, larval cases on *Cytisus*, 1-VII-2014, Corley. Middle latitudes of Europe, absent from several countries, particularly in the east (CORLEY, 2015b).

\**Coleophora limosipennella* (Duponchel, 1743)

TM: Carracedo, larva on *Ulmus minor*, 5-VII-2014, Corley. Most of Europe, except the far north and absent from a few countries.

*Coleophora serratella* (Linnaeus, 1761)

Second and subsequent records. AAL: Galegos, larval cases on *Alnus glutinosa*, 15-IV-1997, Corley; BA: Quinta da Taberna, 28-VI-2008, Pires and Marabuto, det. Corley; M: Assureira, cases on *Betula pubescens*, 17-V-2009, Corley; TM: Fresulfe, cases on *Ulmus minor*, 27-IX-2005, Corley. Previously recorded from Beira Alta (MENDES, 1904).

*Coleophora juncicolella* Stainton, 1851

Second record. TM: Gondesende, 2-VII-2014, Corley. Previously recorded from Beira Baixa (MENDES, 1904).

*Coleophora calycotomella* Stainton, 1869

Third and subsequent records. AAL: Galegos, 3-VI-1996, Corley, det. Baldizzone; BA: Guarda, 20-VII-2014, Romão, det. Corley; DL: Valongo, 23-VIII-2014, Nunes, det. Corley; TM: Gondesende, 2-VII-2014, Corley. Previously recorded from two localities in Beira Baixa (MENDES, 1904).

\**Coleophora micronotella* Toll, 1956

ALG: Ilha da Culatra, 3-VIII-2008, Cardoso, det. Baldizzone. Spain, Italy, Sardinia. Larva unknown.

\**Coleophora spumosella* Staudinger, 1859

BAL: Almogrove, larvae on *Lotus creticus*, 17-IV-2014, Marabuto. Spain. France, Switzerland, Italy.



*Coleophora caespitiella* Zeller, 1839

Second to fifth records. BA: Quinta da Taberna, 28-VI-2008, Pires and Marabuto, det. Corley; DL: Parque Biológico de Gaia, 9-VI-2008, Corley; M: Costa da Cabrita, flying by day, 1-VII-2014, Corley; TM: Gondesende, 18-VI-2010, Corley. Previously recorded from Baixo Alentejo (CORLEY, 2004). Earlier records from Algarve and Estremadura were erroneous, see CORLEY & GOODEY (2014).

*Coleophora lassella* Staudinger, 1859

TM: Gondesende, larval cases on *Juncus bufonius*, 11-X-2014, Corley.

*Coleophora insulicola* Toll, 1942

Second locality. BL: Ansião, 12-VIII-2014, Rosete, det. Corley. Previously recorded from Beira Litoral (PIRES & CORLEY, 2007). An earlier record (VIVES MORENO, 1987) is of uncertain provenance.

(\*) *Coleophora adelogrammella* Zeller, 1849

TM: Gondesende, 2-VII-2014, Corley. The species was earlier mentioned as present in Portugal (BALDIZZONE, 1987), but the origin of the citation is not known (BALDIZZONE, pers. comm.). The species was not given for Portugal in VIVES MORENO (1987). Widespread over much of Europe, but with a scattered distribution and absent from a number of countries. [*Dianthus*, *Petrorhagia*].

\**Coleophora granulatella* Zeller, 1849

BL: Praia do Samouco, 5-VIII-2014, Rosete, det. Baldizzone. Most of north and west Europe, but absent from British Isles, and with very limited distribution in south and east Europe. [*Artemisia campestris*].

*Coleophora saponariella* Heeger, 1848

Extension of range. TM: Ponte de Castrelos, larval cases on *Saponaria officinalis*, 12-X-2014, Corley. Previously recorded from three localities in the Tua valley, Trás-os-Montes, see CORLEY *et al.* (2009).

*Coleophora salicorniae* Heinemann & Wocke, 1877

Extension of range. BL: Ilha da Murraceira, 28-VI-2014, Corley and Rosete. Previously recorded from two localities in Algarve (CARVALHO & CORLEY, 1995; CORLEY *et al.*, 2000).

## BATRACHEDRIDAE

*Batrachedra parvulipunctella* Chrétien, 1915

Third record. BL: Salreu, larva found on *Phragmites australis*, 19-III-2014, Gonçalves and Andrade, det. Corley from photo of emerged adult.

## SCYTHRIDIDAE

*Scythris parafuscoana* Bengtsson, 1991

Third and subsequent records. TM: São Lourenço, 20-VII-2006, Corley; Caldas de Carlão, 31-VII-2014, Pires and Romão, det. Corley. Previously recorded from Alto Alentejo and Trás-os-Montes (CORLEY *et al.*, 2006).

*Scythris cistorum* (Millière, 1876)

Extension of range. BA: Trilho da Rota das Faias, 18-VIII-2014, Rosete, det. Corley; TM: Regato



de Vidoeiro, 20-VI-2010, Corley. Previously recorded from Algarve (MONTEIRO & CARVALHO, 1984) and Beira Baixa (MENDES, 1913; MARABUTO *et al.*, 2013).

#### BLASTOBASIDAE

*Tecmerium anthophaga* (Staudinger, 1870)

Extension of range. BA: Poço do Inferno, 12-VII-2009, Corley; TM: Amieiro, pupa in seed head of *Lavandula stoechas*, 2-VI-2008, Corley; Carrazedo, 5-VII-2014, Corley. Previously recorded from three localities in Algarve (CORLEY, 2005).

*Tecmerium spermophagia* Walsingham, 1907

Third record. TM: Trinta, 20-VII-2014, Rosete, det. Corley. Previously recorded from Algarve (CARVALHO & CORLEY, 1995; CORLEY *et al.*, 2000).

#### STATHMOPODIDAE

\**Stathmopoda pedella* (Linnaeus, 1761)

BA: Matança, 17-VII-2014, Romão. Nearly all Europe, but absent from most of the Balkans and Mediterranean islands. [In developing fruits of *Alnus glutinosa* and *A. incana*].

*Neomariania rebeli* (Walsingham, 1894)

Second and third records. DL: Mindelo, 29-V-2004, Corley; BL: Praia do Samouco, 25-VII-2014, Rosete, det. Corley. Previously recorded from Estremadura (RIEDL, 1990).

#### PTEROPHORIDAE

*Agdistis adactyla* (Hübner, 1819)

Third record. BL: Lourical, 22-VII-2014, Rosete, det. Corley. Previously recorded from Algarve and Trás-os-Montes, see CORLEY *et al.* (2011).

(\*) *Crombrugghia distans* (Zeller, 1847)

M: Podre, 30-VI-2014 Corley. All earlier records of this species were rejected by CORLEY (2015a). Almost all Europe except the most northern parts. [*Hieracium*, *Crepis*, *Sonchus*, *Cichorium*, *Picris*].

*Gypsochares bigoti* Gibeaux & Nel, 1989

Extension of range. BA: Batocas, 17-X-2014, Corley. Previously recorded from Algarve and Trás-os-Montes, see CORLEY *et al.* (2013).

*Hellinsia inulae* (Zeller, 1852)

Extension of range. BAL: Zambujeira do Mar, 18-VIII-2011, Pires, det. Corley; DL: Valongo, 23-VIII-2014, Nunes, det. Corley. Previously recorded from Algarve (BIGOT & CARVALHO, 1983) and other later records, Beira Litoral (PIRES & CORLEY, 2007) and Beira Baixa (MARABUTO *et al.*, 2013).

#### EPERMENIIDAE

*Ochromolopis ictella* (Hübner, 1813)

Third record. TM: Carrazedo, 11-X-2014, Corley and Silva. Previously recorded from Trás-os-Montes (CORLEY *et al.*, 2012a) and Minho (CORLEY *et al.*, 2013).

## CHOREUTIDAE

*Prochoreutis sehestediana* (Fabricius, 1776)

Second record. M: Bertandos, 19-X-2014, Corley, Silva and Nunes. Previously recorded from Alto Alentejo (CORLEY *et al.*, 2006).

## TORTRICIDAE

*Isotrias hybridana* (Hübner, 1817)

Second and subsequent records. BA: Poço do Inferno, 12-VII-2009, 23-VI-2010, Corley; TM: Gondesende, 8-VII-2009, Corley; Carrazedo, 5-VII-2014, Corley. Previously recorded from Trás-os-Montes (CORLEY *et al.*, 2009).

*Ditula angustiorana* (Haworth, 1811)

DL: Valongo, larva on *Taxus baccata*, 4-I-2014, Nunes.

*Avaria joannisia* (Ragonot, 1888)

Second and subsequent records. BA: Batocas, 17-X-2014; TM: Amieiro, 20-X-2010, Corley; Abreiro station, 15-X-2011, Corley; Carrazedo, 11-X-2014, Corley and Silva. Previously recorded from Trás-os-Montes (CORLEY *et al.*, 2009).

*Oporopsamma dunaria* Šumpich, 2011

Second locality. BL: Praia do Samouco, 24-IX-2014, Rosete, det. Corley. Previously recorded from Algarve (CORLEY *et al.*, 2012a).

*Tortricodes alternella* (Denis & Schiffermüller, 1775)

Extension of range. BL: Ansião, 8-II-2013, 15-II-2014, Rosete, det. Corley; TM: Gondesende, 21-III-2011, Corley. Previously recorded from Algarve, Estremadura and Minho, see CORLEY *et al.* (2009).

*\*Eana nevadensis* (Rebel, 1928)

TM: Porto do Sabor, 4-VII-2014, Corley and Maravalhas. Spain, France. Larva unknown.

*Cnephasia laetana* (Staudinger, 1871)

Extension of range. BA: Poço do Inferno, 12-VI-2014, Marabuto and Romão. Previously recorded from Estremadura and Minho (CORLEY *et al.*, 2006) and from Trás-os-Montes (CORLEY *et al.*, 2011).

*Acleris hyemana* (Haworth, 1811)

Second and third records. BB: São Vicente da Beira, undated, Mendes, det. Corley (ZMCP); BA: Quinta da Taberna, 16-X-2014, Corley, Marabuto and Romão. Previously recorded from Beira Litoral (CORLEY *et al.*, 2014).

*Cochylimorpha hilarana* (Herrich-Schaffer, 1851)

Second record. DL: Mindelo, 9-VII-2014, Corley, Nunes and Silva. Previously recorded from Beira Litoral (CORLEY *et al.*, 2014).

*Cochylis nana* (Haworth, 1811)

Third record. BA: Covão da Ametade, 7-VII-2014, Corley and Romão. Previously recorded from Minho and Trás-os-Montes (CORLEY, 2015a).

*Lobesia arzilae* Trematerra, 2014

Third and fourth localities. E: Vale de Rosal, IV-1909, Mendes (ZMCP), det. Corley; BL: Ansião, 13-IV-2014, Rosete, det. Corley. Previously recorded from two localities in Beira Litoral (TREMATERRA, 2014).

*Lobesia porrectana* (Zeller, 1847)

Second record. ALG: Corte do Gago, IV-2014, Jacinto, det. Corley from photo. Previously recorded from Algarve (CORLEY *et al.*, 2012b).

*Bactra robustana* (Christoph, 1872)

Second record. BL: Ilha da Murraceira, 28-VI-2014, Corley and Rosete. Previously recorded from Algarve (CORLEY, 2005).

*Ancylis diminutana* (Haworth, 1811)

Fourth record. BL: Salreu, 13-VII-2014, Gonçalves, det. Corley. Previously recorded from Beira Alta (RAGONOT, 1881), Beira Litoral (PIRES & CORLEY, 2007) and Minho (CORLEY *et al.*, 2012b).

*Ancylis achatana* (Denis & Schiffermüller, 1775)

Second record. TM: Carrazedo, 5-VII-2014, Corley. Previously recorded from Trás-os-Montes (CORLEY *et al.*, 2012a).

\**Epinotia sordidana* (Hübner, 1824)

TM: Ponte de Castrelos, 11-X-2014, Corley. Nearly all Europe, but absent from most of the Balkans and Mediterranean islands. [*Alnus glutinosa*].

*Epinotia dalmatana* (Rebel, 1891)

Second locality. TM: Carrazedo, 5-VII-2014, Corley. Previously recorded from Algarve (CORLEY, 2005).

*Epinotia bilunana* (Haworth, 1811)

Second record. M: Podre, 30-VI-2014, Corley. Previously recorded from Trás-os-Montes (CORLEY *et al.*, 2012a).

*Eucosma conterminana* (Guenée, 1845)

Second record. BA: Guarda, 20-VII-2014, Pires and Romão, det. Corley. Previously recorded from Beira Litoral (CORLEY *et al.*, 2014).

*Grapholita gemmiferana* Treitschke, 1835

Third to fifth records. AAL: Marco, larva on *Lathyrus* sp., 12-V-1999, Corley; DL: Vairão, 19-V-2006, Corley; TM: Amieiro, 2-VI-2008, Corley. Previously recorded from Estremadura (VIEILLEDENT, 1905) and Beira Litoral (PIRES & CORLEY, 2007).

*Pammene suspectana* (Lienig & Zeller, 1846)

Second record. BA: Guarda, 13-VIII-2014, Romão, det. Corley. Previously recorded from Trás-os-Montes (CORLEY *et al.*, 2007).

\*\**Pammene purpureana* (Constant, 1888)

BL: Ansião, 13-IV-2014 Rosete, det. Corley. France, Switzerland. [In shoots and developing fruits of *Arbutus unedo*] (CORLEY, 2015b).

## HETEROGYNIDAE

*Heterogynis* Rambur 1837

The genus *Heterogynis* has received very little attention in Portugal. The first published records were of *H. penella* Hübner, 1819 (given as *H. paradoxa* Hb. nec Rambur (= *penella* Hb.)) from Vesúvio (Douro), Arcas (Trás-os-Montes) and Elvas, in CRUZ & GONÇALVES (1955). There are eight male specimens from Vesúvio in IZPC collected by Silva Cruz in April 1941, determined as *H. paradoxa* by T. Monteiro, and also a whitish grey cocoon, clearly not belonging to *H. paradoxa*.

CRUZ & GONÇALVES (1974) repeated the Vesúvio record but under the name *H. paradoxa* (Rbr.). In their subsequent Portuguese catalogue (CRUZ & GONÇALVES, 1977) they again give *Heterogynis paradoxa* Rambur as the only Portuguese species.

ZILLI & RACHELI (1989) pointed out that by far the best way of separating *H. penella* and *H. paradoxa* is by the cocoons, white to yellow in *penella* and pink, red or orange in *paradoxa*. Their only reference to the genus in Portugal is to mention the presence of *H. paradoxa*, based on CRUZ & GONÇALVES (1977).

The first record unambiguously intended to refer to *H. penella* is from Algarve: S. Miguel [Serra de Monte Figo], larvae and cocoons on *Genista hirsuta*, III-1989, Corley (CARVALHO & CORLEY, 1995). CORLEY *et al.* (2000) give two further Algarve records: Algoz, cocoons on *Genista hirsuta*, III-1996, Corley and larvae on *Genista triacanthos*, Malhada Velha [Serra de Monchique], IV-1997, Corley. The only other published record for *penella* is by E. Marabuto from Salvaterra do Extremo, Beira Baixa, 17-IV-2005 and 24-IV-2005, adults and larvae on *Cytisus multiflorus*, (MARABUTO *et al.*, 2013).

The first records given as *H. paradoxa* Rambur, 1837 and intended to refer to that species (*sensu* ZILLI & RACHELI, 1989) and not *H. penella* are those of Marabuto (MARABUTO & MARAVALHAS, 2008) from Lama Grande, Montesinho, Trás-os-Montes, 18 and 19-VI-2004, adults and larvae on *Genista anglica*, and adults at Senhora da Serra, Serra de Nogueira, 21-VI-2004. The following year a cocoon was found at Soutelo, Trás-os-Montes, 6-VI-2005, Corley (CORLEY *et al.*, 2007). In VII-2007 a larva was found on *Cytisus oromediterraneus* at Nave de Santo António, Serra da Estrela, Corley (CORLEY *et al.*, 2008).

There are no further published records of either species since 2008 apart from the above record in MARABUTO *et al.* (2013). Nevertheless several records have been made of each species. For *H. paradoxa* there is another record from Serra da Estrela, and extensions of range in the north to Vila Pouca de Aguiar and the Castro Laboreiro area in Minho.

For *H. penella* there are records from several new areas: Tua valley, Serra de Alvão, Parque Natural de Montesinho and Miranda do Douro in Trás-os-Montes; Serra da Estrela in Beira Alta.

In recent years Josef de Freina has been studying Spanish *Heterogynis* and has published papers on the genus. His conclusions are different from those of ZILLI & RACHELI (1989) who recognised four species in Spain. De Freina's work continues, but at present he recognises two species, one with two subspecies, in the *H. paradoxa* complex (FREINA, 2011). *H. paradoxa* consists of subsp. *paradoxa* from Sierra Nevada and subsp. *bejarensis* Chapman, 1902 from Sierra de Gredos, at altitudes from 1000 to 2300 m. The other species is *H. yerayi* de Freina, 2011 in the Cantabrian Mountains at altitudes from 900 to 1700 m.

In the *H. penella* complex there are several species but some problems remain unresolved. Two new species have been published: *H. chapmani* de Freina, 2014 occurs in Sierra de Gredos at altitudes of 1340-1600 m. *H. segurana* de Freina, 2014 is mainly found in pine forests in the provinces of Albacete and Jaen and probably elsewhere.

As far as the Portuguese *Heterogynis* populations are concerned, a clearer picture has emerged for the *paradoxa* complex, see below, but as yet there is little certainty over the *H. penella* complex. *H. penella* records from Serra da Estrela can be assumed to belong to *H. chapmani*, but it would be desirable to confirm this from adult specimens.

\**Heterogynis chapmani* de Freina, 2014

BA: Vale de Zêzere, 2.5 km S. W. of Manteigas, cocoons on *Cytisus*, 10-VII-2007, Corley; Covão do Vidual, cocoons on *Cytisus*, 4-X-2008, Corley, Marabuto and Pires. Spain.

Identification of the *H. penella* group from other parts of Portugal requires adequate material, but is also dependent on the results of further research on the taxonomy of the group. There are clearly two species in Algarve, where populations with different food plant, different cocoons and different population structure occur side by side. Records from the Douro valley are likely to belong to another species. VIVES MORENO (2014) gives *H. canalensis* Chapman, 1904 for Portugal, but without indication of the origin of this record.

Specimens of the *paradoxa* complex sent to de Freina have been identified as follows:

*Heterogynis paradoxa bejarensis* Chapman, 1902

BA: Poço do Inferno, 6-VII-2014, Corley and Romão. The record from Nave de Santo António given in CORLEY *et al.* (2008) belongs here also.

\**Heterogynis yeraui* de Freina, 2011

M: Podre, 30-VI-2014, Corley; TM: Frades, cocoon, 2-VII-2014, Corley, moth emerged 2014. The records of *paradoxa* given in CORLEY *et al.* (2007) and MARABUTO & MARAVALHAS (2008) belong to this species. Spain.

Based on the known distribution of these two species in Spain and the very limited material available from Portugal, it appears that the Cantabrian distribution of *H. yeraui* extends south into Minho and Trás-os-Montes, and that the Sierra de Gredos population of *H. paradoxa bejarensis* extends westwards into Serra da Estrela.

#### LIMACODIDAE

*Hoyosia codeti* (Oberthür, 1883)

BL: Buçaco, larva on *Laurus nobilis*, 12-XI-2014, Gonçalves and Jesus.

#### ZYGAENIDAE

*Zygaena lavandulae* (Esper, 1783)

Extension of range. ALG: Monte Clérigo, 10-IV-2014, Tremewan. Previously the species was known in Algarve only in the Faro and Loulé areas and also from Trás-os-Montes (GARCIA-PEREIRA *et al.*, 2003).

#### PYRALIDAE

Delete *Aphomia gularis* (Zeller, 1877) (*Paralipsa gularis* (Zeller, 1877))

The record from M: Ponte do Rio Maceira, 16-IX-2003, Corley (CORLEY *et al.*, 2006) is a misidentification of *Bostra obsoletalis*. There is no other record.

*Stemmatophora rungsi* (Leraut, 2000)

Extension of range. AAL: Galegos, 16-IX-1995, Corley; BB: Alameda, 5-VIII-2011, Pires; BA: Covão da Ametade, 13-VIII-2001, Nieukerken, det. Corley; M: Podre, 5-IX-2013, Corley; TM: Casal de Lóivos, 20-IX-2004, Corley; Lama Grande, 4-IX-2013, Corley. Previously recorded from Algarve (CORLEY *et al.*, 2007), Baixo Alentejo (CORLEY, 2004) and Beira Litoral (PIRES & CORLEY, 2007).

*Anerastia lotella* (Hübner, 1813)

Second to fourth records. M: Moledo do Minho and Apúlia, undated, Silva Cruz, specimens in

Monteiro collection; DL: Mindelo, 9-VII-2014, Corley, Nunes and Silva. Previously recorded from Douro Litoral (CORLEY, 2015a).

*Cryptoblabes bistriga* (Haworth, 1811)

Second record. M: Bertandos, 8-VII-2014, Corley. Previously recorded from Douro Litoral (CORLEY, 2015a).

*Pempelia genistella* (Duponchel, 1846)

Extension of range. DL: Árvore, 27-VII-2006, Corley; M: Podre, 28-VII-2011, Corley; TM: Arnal, 26-IX-2003, Corley; Carrazedo, 56-VII-2014, Corley. Previously recorded from Algarve (MONTEIRO & CARVALHO, 1984), Estremadura (MENDES, 1910a) and Beira Litoral (PIRES & CORLEY, 2007).

*Pempelia brephiella* (Staudinger, 1879)

Second and subsequent records. BA: Lapa dos Dinheiros, 29-VII-2014, Pires, det. Corley; DL: Vila Nova de Gaia, undated, Silva Cruz, det. Corley (IZPC); TM: Arnal, 2-IX-2002, Corley; Montesinho, 9-VII-2009, Corley. Previously recorded from Algarve (MONTEIRO & CARVALHO, 1984).

*Epischmia asteris* Staudinger, 1870

Extension of range. AAL: Galegos, 16-IX-1995, Corley; BL: Ilha da Murraceira, 18-X-2014, Corley and Rosete; BA: Batocas, 17-X-2014, Corley; TM: Brunheda, 21-VII-2006, Corley. Previously recorded from Algarve (MONTEIRO & CARVALHO, 1984; CORLEY *et al.*, 2000), Baixo Alentejo (CORLEY, 2004) and Beira Baixa (MARABUTO *et al.*, 2013).

*Elegia fallaximima* Nel & Mazel, 2011

Extension of range. M: Bertandos, 8-VII-2014, Corley. Previously recorded from Algarve and Alto Alentejo, see CORLEY *et al.* (2014).

*Elegia similella* (Zincken, 1818)

Extension of range. BL: Cruz Alta, 21-VII-2014, Pires; M: Cascata da Laja, 15-VI-2010, Corley; Bertandos, 16-VI-2012, Corley; Podre, 28-VII-2014, Corley. Previously recorded from Beira Baixa (MENDES, 1913) and Beira Alta (CORLEY *et al.*, 2011). Earlier record from Beira Litoral (PIRES & CORLEY, 2007) belongs to *E. fallax*.

*Psorosa dahliaella* (Treitschke, 1832)

Extension of range. AAL: São Julião Igreja, 27-IX-1999, Corley; BA: Quinta da Maúncia, 12-VII-2014, Romão, det. Corley; TM: Amieiro, 10-IX-2006, Corley. Previously recorded from Algarve (MONTEIRO & CARVALHO, 1984; CARVALHO & CORLEY, 1995; CORLEY *et al.*, 2000).

*Pseudacrobasis tergestella* (Ragonot, 1901)

Third Portuguese record. BL: Mata do Buçaco, 27-VII-2014, Gonçalves, det. Corley. Previously recorded from Algarve (CORLEY *et al.*, 2000) and Alto Alentejo (CORLEY *et al.*, 2012b).

*Acrobasis repandana* (Fabricius, 1798)

Third and fourth records: TM: Montouto, 31-VII-2001, Nieukerken; São Lourenço, 20-VII-2006, Corley. Previously recorded from Algarve (MONTEIRO & CARVALHO, 1984) and Douro Litoral (MONTEIRO, 1962).

*Metallostichodes nigrocyanella* (Constant, 1865)

Extension of range. BL: Ilha da Murraceira, 28-VI-2014, Corley and Rosete. Previously recorded from Estremadura (MENDES, 1910a), Algarve (CORLEY *et al.*, 2000; CORLEY, 2005) and Baixo Alentejo (CORLEY, 2004).

*Assara conicolella* (Constant, 1884)

Second record. Guarda, 20-VII-2014, Pires, det. Corley. Previously recorded from Beira Litoral (CORLEY *et al.*, 2007).

*Phycitodes bentinckella* (Pierce, 1937)

Second record. AAL: Portas do Rodão, 7-VII-2014, Rosete, det. Corley. Previously recorded from Beira Baixa (CORLEY *et al.*, 2014).

*Phycitodes lacteella* (Rothschild, 1915)

Second to fourth records. TM: Abreiro station, 10-X-2010, Corley; Freixiel, 2-X-2010, Corley; Caldas de Carlão, 31-VII-2014, Pires and Romão, det. Corley. Previously recorded from Beira Alta (CORLEY, 2002).

#### CRAMBIDAE

*Spoladea recurvalis* (Fabricius, 1775)

Fourth and subsequent records. ALG: Ilha da Culatra, 2-VIII-2008, Cardoso, det. Corley; Cabo de São Vicente, 27-X-2010, Corley; BL: Louriçal, 11-VIII-2011, Rosete; Ilha da Murraceira, 18-X-2014, Corley, Rosete, Ferreira and Gonçalves. Previously recorded in Algarve (CORLEY *et al.*, 2000) and Baixo Alentejo (CORLEY, 2004). Since the first record in 1995, this migratory species has become quite frequent and is probably now resident at least in Algarve.

*Evergestis marocana* (D. Lucas, 1956)

Third and fourth records. DL: Mindelo, 31-V-2005, Corley; BL: Praia do Samouco, 4-VII-2014, Rosete, det. Corley. Previously recorded from Baixo Alentejo (CORLEY, 2004) and Algarve (CORLEY, 2005).

\**Scoparia subfusca* Haworth, 1811

TM: Carrazedo, 5-VII-2014, Corley. Almost all Europe except the far north and some Mediterranean islands. [Roots of *Picris hieracioides*].

Delete *Hyperlais siccalis* (Guenée, 1854).

The records in CORLEY *et al.* (2011; 2012a) belong to the next species.

\**Hyperlais glyceralis* (Staudinger, 1859)

TM: Carrazedo, 23-V-2009, Corley, Marabuto and Pires; Gondesende, 18-VI-2010, Corley. These two specimens previously misidentified as *H. siccalis*, see CORLEY *et al.* (2011; 2012a). Spain. Larva unknown.

#### DREPANIDAE

*Cilix hispanica* De-Gregorio *et al.*, 2002

DL: Valongo, reared from larva on *Pyrus*, found 12-X-2014, Nunes, det. Corley.

#### LASIOCAMPIDAE

*Eriogaster rimicola* (Denis & Schiffermüller, 1775)

Extension of range. BA: Batocas, 17-X-2014, Corley. Previously recorded from Alto Alentejo (CORLEY *et al.*, 2007) and Beira Litoral (CORLEY *et al.*, 2013).



## GEOMETRIDAE

*Idea efflorata* Zeller, 1849

Extension of range. ALG: Ferragudo, 3-IX-2006, Proklov; Salema, 22-IX-2009, Skou; BL: Praia do Samouco, 25-VII-2014, Rosete. Previously recorded from three localities in Estremadura (MENDES, 1910a; CARNEIRO-MENDES, 1951; CARVALHO, 1980).

*Brachyglossina hispanaria* (Püngeler, 1913)

Extension of range. AAL: Portas do Rodão, 7-VII-2014, Rosete; BA: Poço do Inferno, 12-VII-2009, Corley; TM: São Lourenço, 20-VII-2006, Corley. Previously recorded from Estremadura (CRUZ & WATTISON, 1935) and from Algarve (CARVALHO & CORLEY, 1995; CORLEY *et al.*, 2000).

*Cyclophora albipunctata* (Hufnagel, 1767)

Third Portuguese locality. TM: Carrizado, 11-X-2014, Corley and Silva. Previously recorded from two localities in Minho, see CORLEY *et al.* (2013).

*Colostygia olbiaria* (Millière, 1865)

Extension of range. R: Formigais, 9-I-2014, Rosete; BL: Ansião, 20-XII-2012, Rosete. Previously recorded from Estremadura (VIEILLEDENT, 1905), Trás-os-Montes (CRUZ & GONÇALVES, 1966) and Algarve (CORLEY *et al.*, 2000).

*Agriopis aurantiaria* (Hübner, 1799)

Second Portuguese record. M: Loureda, on wall, 2-I-2014, Ricardo Carvalho. Previously recorded from Minho (CARVALHO, 1984).

## NOTODONTIDAE

*Drymonia ruficornis* (Hufnagel, 1766)

Extension of range. BL: Ansião, 13-IV-2014, Rosete; BA: Fóios, 27-V-2013, Marabuto and Romão; TM: Cabecico da Vinha, 9-V-2007, Corley, Marabuto and Pires; Gondesende, 21-V-2009, Corley. Previously recorded from Minho (CRUZ & WATTISON, 1929, 1931) and Douro Litoral (MONTEIRO, 1964). The record from Algarve (MONTEIRO & CARVALHO, 1984) is questionable.

*Rhegmaphila alpina* (Bellier, 1881)

Second and third records. TM: Ponte de Parâmio, 3-VI-2005, Corley, Marabuto and Pires; Gondesende, 2-VII-2014, Corley. Previously recorded from Trás-os-Montes (MONTEIRO & MARAVALHAS, 1987).

## EREBIDAE

*Ocneria atlantica* (Rambur, 1837)

Extension of range. BAL: Sobral de Adiça, 5-VI-2008, Corley and Marabuto; AAL: Gavião, 3-IX-2014, Rosete. A frequent species in Algarve (MONTEIRO & CARVALHO, 1984) with further records along the Atlantic coast to Estremadura (CORLEY, 2004; VIEILLEDENT, 1905).

*Eilema depressa* (Esper, 1787)

Extension of range. DL: Parque Biológico de Gaia, 9-VI-2010, Corley; M: Bertandos, 19-X-2014, Corley, Nunes and Silva. Previously recorded from Estremadura and Beira Litoral, see CORLEY *et al.*, (2008).



\**Lygephila glycyrrhizae* (Rambur, 1866)

TM: Carracedo, 5-VII-2014, Corley. Spain. Larva unknown.

*Phytometra sanctiflorentis* (Boisduval, 1834)

Extension of range. BAL: Ribeira de Limas, 9-IV-2011, Romão, det. Corley; AAL: São Mamede, 31-VIII-2001, Corley; BL: Serra da Lousã, 25-VI-2011, Rosete; TM: Porto do Sabor, 4-VII-2014, Corley and Maravalhas. Previously recorded from Estremadura (MENDES, 1910b), Douro Litoral (CRUZ, 1971) and Minho (CARVALHO, 1986).

*Catocala fraxini* (Linnaeus, 1758)

Second to fourth records. TM: Moimenta, in house, 6-IX-2002, A. and M. Corley; Fresulfe, 25-IX-2005, Corley and Maravalhas; AAL: Marvão, 20-IX-2014, Gonçalves. Previously recorded from Beira Alta (CORLEY, 2002).

*Cerocala scapulosa* (Hübner, 1808)

Extension of range. BL: Mata do Urso, 2-V-2014, Rosete. Frequent on the coast in south Portugal (e.g. CORLEY *et al.*, 2000) with the previous northernmost record in Estremadura (MENDES, 1910a).

## NOCTUIDAE

*Diloba caeruleocephala* (Linnaeus, 1758)

Third and fourth records. TM: Gondesende, 10-X-2014, Corley; Carracedo, 11-X-2014, Corley and Silva. Previously recorded from Trás-os-Montes and Beira Alta, see CORLEY *et al.* (2013).

*Cucullia gnaphalii* (Hübner, 1813)

Second Portuguese record. M: Podre, 30-VI-2014, Corley. Previously recorded from Minho (CARVALHO, 1986).

*Anthracia ephialtes* (Hübner, 1822)

Second record. AAL: Galegos, under bridge, 19-IX-1995, Corley. Previously recorded from Estremadura (CRUZ & GONÇALVES, 1961).

*Olivenebula xanthochloris* (Boisduval, 1840)

Extension of range. BL: Ansião, 9-X-2014, Corley, Rosete, I. Ferreira and Gonçalves. Previously recorded from Beira Alta, Minho and Trás-os-Montes, see CORLEY *et al.* (2014).

\**Apamea lateritia* (Hufnagel, 1766)

TM: Porto do Sabor, 4-VII-2014, Corley and Maravalhas. Widespread in Europe, but rare in the south and absent from Mediterranean islands. [*Deschampsia*, *Festuca*, *Nardus*].

\**Scotochrosta pulla* (Denis & Schiffermüller, 1775)

BA: Guarda, 13-IX-2014, Romão, det. Corley from photo; Batocas, 17-X-2014, Corley. Southern and south central Europe, reaching north to Czech Republic; absent from Mediterranean islands. [*Quercus*].

*Aporophyla canescens* (Duponchel, 1826)

Extension of range. BL: Chão do Ulmeiro, 18-X-2007, Rosete; M: Ameijoeira, 9-XI-2012, Corley, Marabuto and Merckx. Previously recorded from Beira Baixa (MENDES, 1903), Estremadura (CARNEIRO-MENDES, 1951) and Trás-os-Montes (CRUZ & WATTISON, 1935).

*Anarta sodae* (Rambur, 1829)

Extension of range. BL: Ilha da Murraceira, 30-VI-2014, Corley and Rosete. Previously recorded from Algarve (MONTEIRO & CARVALHO, 1984) and Baixo Alentejo (CORLEY, 2004).

*Lacanobia blenna* (Hübner, 1824)

Second record. BL: Ilha da Murraceira, 28-VI-2014, Corley and Rosete. Previously recorded from Beira Litoral (CORLEY *et al.*, 2013).

*Xestia triangulum* (Hufnagel, 1766)

Second and third records. TM: Gondesende, 2-VII-2014, Corley; Carrazedo, 5-VII-2014, Corley. Previously recorded from Trás-os-Montes (CORLEY *et al.*, 2011).

### Recent Literature affecting the Portuguese Lepidoptera fauna list

ARNSCHEID (2014) amplifies the information on *Pseudobankesia casaella* in Portugal which was given in CORLEY *et al.* (2013).

BILLI & NEL (2014) add *Phereoecca lodli* Vives, 2001 to the Portuguese fauna.

CORLEY (2014) describes five new species of Microlepidoptera from Portugal: *Caloptilia conimbricensis* Corley, *Denisia piresi* Corley, *Filatima algarbiella* Corley, *Stomopteryx lusitaniella* Corley & Karsholt and *Agnoea nonscriptella* Corley.

CORLEY (2015a) gives the results of study of various historical collections, resulting in the addition of 12 species and the deletion of 93.

CORLEY (2015b) lists 2588 species of Lepidoptera for Continental Portugal.

CORLEY & GOODEY (2014) examined the Microlepidoptera collected by A. E. Eaton in Portugal in 1880 which are in BMNH. Seven species are deleted from the Portuguese fauna. One species, *Aroga eatoni* Corley & Goodey, 2014 (Gelechiidae) is described as new.

CORLEY *et al.* (2014) add 27 species to the Portuguese fauna and delete four.

KARSHOLT & VIVES MORENO (2014) describe *Neofriseria hitadoella* from Spain and Portugal from material hitherto assigned to *N. baungardiella* Huemer & Karsholt, 1999.

LAŠTŮVKA & LAŠTŮVKA (2014a) add *Phyllonorycter cephalariae* (Lhomme, 1934), *P. ulicicolella* (Stainton, 1851) and *Phyllocnistis extrematrix* Martynova, 1955 to the Portuguese fauna.

LAŠTŮVKA & LAŠTŮVKA (2014b) describe *Phyllonorycter hispanicus* from Spain with one Portuguese record.

LAŠTŮVKA & LAŠTŮVKA (2014c) add *Synanthedon scoliaeformis* (Borkhausen, 1789), *S. formicaeformis* (Esper, 1783) and *Bembecia astragali* (Joannis, 1909) to the Portuguese fauna, while deleting *B. sirphiformis*.

LAŠTŮVKA & LAŠTŮVKA (2014d) add *Stigmella sakhalinella*, *Bucculatrix albedinella*, *Parornix tenella* and *Phyllonorycter ochreojunctella* to the Portuguese fauna.

SOBCZYK *et al.* (2014) describe *Oiketicoides hispanolusitania* from Portugal.

TREMATERRA (2014) describes two new species of Tortricidae from Portugal, *Lobesia arzilae* Trematerra, 2014 and *Willibaldiana culatrae* Trematerra, 2014.

VIVES MORENO (2014) gives a total of 2625 species for Portugal in his new *Catálogo Sistemático y Sinonímico*, which also covers 10 other territories. This figure is in excess of the total species for Portugal in CORLEY (2015b), mainly because it has not excluded a number of species for which there are no acceptable records.

### Acknowledgements

We thank all those who have allowed us to include their records, Joana Marques for identifying the lichen *Leprocaulon microcarpum* for us, Wilfried Arnscheid for identification of *Placodoma vetaella*, Zdenek Laštůvka for confirmation of *Acrocercops cocciferellum*, Giorgio Baldizzone for

identification of *Coleophora micronotella* and *C. granulata*, Mikhail Kozlov for the identification of *Adela mazzolella*, Josef de Freina for identification of *Heterogynis* and Antonio Vives for suggesting that the Portuguese *Hyperlais* might be misidentified.

## BIBLIOGRAPHY

- AMSEL, H. G., 1957.– Neue Microtineiden aus Portugal.– *Beiträge zur naturkundlichen Forschung in Südwestdeutschland*, **16**: 30-33.
- AMSEL, H. G., 1959.– Portugiesische Kleinschmetterlinge gesammelt von Teodoro Monteiro, O. S. B.– *Anais da Faculdade de Ciências do Porto*, **41**: 5-20.
- ARNSCHIED, W. R., 2014.– Distribution et écologie de *Penestoglossa pyrenaella* Herrmann, 2006 et de *Pseudobankesia casaella* Hättenschwiler, 1994 en France et dans la Péninsule Ibérique (Lepidoptera Psychidae).– *L'Entomologist*, **70**: 337-341.
- BALDIZZONE, G., 1987.– Contributions à la connaissance des Coleophoridae. XLVII. Sur quelques Coleophoridae de la collection von Heyden.– *Alexanor*, **15** Suppl.: 17-28.
- BIDZILYA, O. V. & KARSHOLT, O., 2013.– Two little-known species of Gelechiidae in the European fauna.– *Nota lepidopterologica*, **36**: 77-84.
- BIGOT, L. & CARVALHO, J. PASSOS DE, 1983.– Contribution à la connaissance des Lépidoptères *Pterophoridae* du Portugal.– *Alexanor*, **13**: 133-137.
- BILLI, F. & NEL, J., 2014.– *Phereoeca lodli* Vives, 2001, espèce nouvelle pour le Portugal (Lepidoptera, Tineidae, Tineinae).– *Revue de l'Association Roussillonaise d'Entomologie*, **23**(2): 76-77.
- CARNEIRO-MENDES, F., 1951.– Lepidópteros (Macro) da região de Sintra.– *Boletim da Sociedade portuguesa de Ciências naturais (Series 2)*, **3**: 47-65.
- CARVALHO, J. PASSOS DE, 1980.– Segunda notícia sobre a Entomofauna do Parque Natural da Arrábida.– *Natureza e Paisagem*, **9**: 30-33.
- CARVALHO, J. PASSOS DE, 1984.– *Contribuição para o conhecimento da Lepidopterafauna do Parque Nacional. Família Geometridae*: 40 pp. Parque Nacional da Peneda-Gerês.
- CARVALHO, J. PASSOS DE, 1986.– *Contribuição para o conhecimento da Lepidopterafauna do Parque Nacional. Família Noctuidae*: 44 pp. Parque Nacional da Peneda-Gerês.
- CARVALHO, J. PASSOS DE, & CORLEY, M. F. V., 1995.– Additions to the Lepidoptera of Algarve, Portugal.– *SHILAP Revista de lepidopterologia*, **23**(91): 191-230.
- CASTROVIEJO, S., 1986-2014.– *Flora Iberica*: **1**: 575 pp., **2**: 897 pp., **3**: 730 pp., **4**: 730 pp., **5**: 320 pp., **6**: 592 pp., **7**: 1119 pp., **8**: 375 pp., **10**: 498 pp., **11**: 672 pp., **12**: 650 pp., **13**: 677 pp., **14**: 251 pp., **15**: 449 pp., **16**: 734 pp., **17**: 298 pp., **18**: 420 pp., **20**: 651 pp., **21**: 366 pp. Real Jardín Botánico, Madrid.
- CORLEY, M. F. V., 2002.– A week in Serra da Estrela, Portugal in early September 2001, with additional Lepidoptera species for the Portuguese fauna.– *Entomologist's Record and Journal of Variation*, **114**: 97-104.
- CORLEY, M. F. V., 2004.– Provisional list of the Lepidoptera of Lagoa de Santo André, Baixo Alentejo, Portugal. (Insecta: Lepidoptera).– *SHILAP Revista de lepidopterologia*, **32**(126): 105-138.
- CORLEY, M. F. V., 2005.– Further additions to the Lepidoptera of Algarve, Portugal. II. (Insecta: Lepidoptera).– *SHILAP Revista de lepidopterologia*, **33**(131): 347-364.
- CORLEY, M. F. V., 2014.– Five new species of Microlepidoptera from Portugal.– *Entomologist's Record and Journal of Variation*, **126**: 229-243.
- CORLEY, M. F. V., 2015a.– The Lepidoptera collections of deceased Portuguese lepidopterists. II.– *Entomologist's Gazette*, **66**: 25-49.
- CORLEY, M. F. V., 2015b.– *Lepidoptera of Continental Portugal: a fully revised list*. VI + 282 pp. Martin Corley, Faringdon.
- CORLEY, M. F. V., CARDOSO, J. P., DALE, M. J., MARABUTO, E., MARAVALHAS, E. & PIRES, P., 2012a.– New and interesting Portuguese Lepidoptera records from 2010. (Insecta: Lepidoptera).– *SHILAP Revista de lepidopterologia*, **40**(157): 5-21.
- CORLEY, M. F. V., GARDINER, A. J., CLEERE, N. & WALLIS, P. D., 2000.– Further additions to the Lepidoptera of Algarve, Portugal (Insecta: Lepidoptera).– *SHILAP Revista de lepidopterologia*, **28**(111): 245-319.
- CORLEY, M. F. V. & GOODEY, B., 2014.– A re-examination of the Portuguese Microlepidoptera collected by the Reverend A. E. Eaton in 1880.– *Entomologist's Gazette*, **65**: 15-25.

- CORLEY, M. F. V., MARABUTO, E. & PIRES, P., 2007.– New Lepidoptera for the fauna of Portugal (Insecta: Lepidoptera).– *SHILAP Revista de lepidopterología*, **35**(139): 321-334.
- CORLEY, M. F. V., MARABUTO, E., MARAVALHAS, E., PIRES, P. & CARDOSO, J. P., 2008.– New and interesting Portuguese Lepidoptera records from 2007. (Insecta: Lepidoptera).– *SHILAP Revista de lepidopterología*, **36**(143): 283-300.
- CORLEY, M. F. V., MARABUTO, E., MARAVALHAS, E., PIRES, P. & CARDOSO, J. P., 2009.– New and interesting Portuguese Lepidoptera records from 2008. (Insecta: Lepidoptera).– *SHILAP Revista de lepidopterología*, **37**(148): 463-484.
- CORLEY, M. F. V., MARABUTO, E., MARAVALHAS, E., PIRES, P. & CARDOSO, J. P., 2011.– New and interesting Portuguese Lepidoptera records from 2009. (Insecta: Lepidoptera).– *SHILAP Revista de lepidopterología* **39**(153): 15-35.
- CORLEY, M. F. V., MARABUTO, E. & PIRES, P., 2007.– New Lepidoptera for the fauna of Portugal (Insecta: Lepidoptera).– *SHILAP Revista de lepidopterología*, **35**(139): 321-334.
- CORLEY, M. F. V., MARAVALHAS, E. & CARVALHO, J. PASSOS DE, 2006.– Miscellaneous additions to the Lepidoptera of Portugal (Insecta: Lepidoptera).– *SHILAP Revista de lepidopterología*, **34**(136): 407-427.
- CORLEY, M. F. V., MERCKX, T., CARDOSO, J. P., DALE, M. J., MARABUTO, E., MARAVALHAS, E. & PIRES, P., 2012b.– New and interesting Portuguese Lepidoptera records from 2011. (Insecta: Lepidoptera).– *SHILAP Revista de lepidopterología*, **40**(160): 489-511.
- CORLEY, M. F. V., MERCKX, T., MARABUTO, E., ARNSCHEID, W. & MARAVALHAS, E., 2013.– New and interesting Portuguese Lepidoptera records from 2012. (Insecta: Lepidoptera).– *SHILAP Revista de lepidopterología*, **41**(164): 449-477.
- CORLEY, M. F. V., ROSETE, J., MARABUTO, E., MARAVALHAS, E. & PIRES, P., 2014.– New and interesting Portuguese Lepidoptera records from 2013. (Insecta: Lepidoptera).– *SHILAP Revista de lepidopterología*, **42**(168): 587-613.
- CORLEY, M. F. V., MERCKX, T., MARABUTO, E., ARNSCHEID, W. & MARAVALHAS, E., 2013.– New and interesting Portuguese Lepidoptera records from 2012. (Insecta: Lepidoptera).– *SHILAP Revista de lepidopterología*, **41**(164): 449-477.
- CORLEY, M. F. V., ROSETE, J., MARABUTO, E., MARAVALHAS, E. & PIRES, P., 2014.– New and interesting Portuguese Lepidoptera records from 2013. (Insecta: Lepidoptera).– *SHILAP Revista de lepidopterología*, **42**(168): 587-613.
- CRUZ, M. A. DA SILVA, 1971.– Contribuição Para o Conhecimento da fauna Entomologica em Portugal. Lepidopteros de Souzaniil (Heterocera) (Douro Litoral).– *Publicações do Instituto de Zoologia Dr. Augusto Nobre*, **112**: 9-16.
- CRUZ, M. A. DA SILVA, & GONÇALVES, T., 1955.– Notas Lepidopterológicas. III. Contribuição Sistemática para o Inventário dos Heteroceros Portugueses.– *Memórias e Estudos do Museu zoológico da Universidade de Coimbra*, **230**: 1-14.
- CRUZ, M. A. DA SILVA, & GONÇALVES, T., 1961.– Notas Lepidopterológicas. IV. Uma Nova Espécie de Rhopalocera para a Fauna Portuguesa e Contribuição Sistemática para o Inventário dos Heteroceros Portugueses.– *Memórias e Estudos do Museu zoológico da Universidade de Coimbra*, **273**: 1-7.
- CRUZ, M. A. DA SILVA, & GONÇALVES, T., 1966.– Notas Lepidopterológicas. V. Contribuição Sistemática para o Inventário dos Heteroceros Portugueses.– *Memórias e Estudos do Museu zoológico da Universidade de Coimbra*, **298**: 5-12.
- CRUZ, M. A. DA SILVA, & GONÇALVES, T., 1974.– Notas Lepidopterológicas. Contribuição Sistemática para o Inventário dos Heteroceros de Portugal.– *Publicações do Instituto de Zoologia Dr. Augusto Nobre*, **122**: 9-12.
- CRUZ, M. A. DA SILVA, & GONÇALVES, T., 1977.– Catálogo sistemático dos macrolepidópteros de Portugal.– *Publicações do Instituto de Zoologia Dr. Augusto Nobre*, **133**: 11-56.
- CRUZ, M. A. DA SILVA, & WATTISON, J. T., 1929.– Lista de Lepidópteros do Gerês.– *Memórias e Estudos do Museu zoológico da Universidade de Coimbra, Série I*, **40**: 1-7.
- CRUZ, M. A. DA SILVA, & WATTISON, J. T., 1931.– Lepidópteros de Vizela coleccionados por M. A. da Silva Cruz e J. T. Wattison (1928-1930).– *Memórias e Estudos do Museu zoológico da Universidade de Coimbra, Série I* **51**: 1-7.
- CRUZ, M. A. DA SILVA, & WATTISON, J. T., 1935.– Heteróceros de Portugal.– *Memórias e Estudos do Museu zoológico da Universidade de Coimbra, Série I*, **87**: 1-104.
- FREINA, J. J. DE, 2011.– Biologie, Verbreitung und Systematik des Komplexes von *Heterogynis paradoxa* Rambur, 1837 mit Beschreibung von *Heterogynis yerayi* sp. n. aus dem Kantabrischen Gebirge, Spanien

- (Lepidoptera: Zygaenoidea, Heterogynidae).– *Nachrichten des entomologischen Vereins Apollo, N. F.*, **32**: 9-24.
- FREINA, J. J. DE, 2014.– Die Artengruppe von *Heterogynis penella* (Hübner, [1819]) auf der Iberischen Halbinsel, mit Beschreibung der zentralspanischen *Heterogynis chapmani* sp. n. (Lepidoptera: Zygaenoidea, Heterogynidae).– *Nachrichten des entomologischen Vereins Apollo, N. F.*, **34**: 185-194.
- GARCIA-PEREIRA, P., GARCIA-BARROS, E. & MARAVALHAS, E., 2003.– Actualización de la distribución geográfica de los Zygaenidae en Portugal continental (Lepidoptera: Zygaenidae).– *SHILAP Revista de lepidopterología*, **31**(122): 157-168.
- HUEMER, P. & KARSHOLT, O., 2010.– *Gelechiidae II (Gelechiinae: Gnorimoschemini)*.– In P. HUEMER, O. KARSHOLT & L. LYNEBORG. (eds.). *Microlepidoptera of Europe*, **6**: 586 pp. Apollo Books, Stenstrup.
- KARSHOLT, O. & RUTTEN, A., 2005.– The Genus *Bryotropha* Heinemann in the Western Palaearctic (Lepidoptera: Gelechiidae).– *Tijdschrift voor Entomologie*, **148**: 77-207.
- KARSHOLT, O. & VIVES MORENO, A., 2014.– Two new Gelechiidae for the Iberian Peninsula (Lepidoptera: Gelechiidae).– *SHILAP Revista de lepidopterología*, **42**(168): 649-653.
- LAŠTŮVKA, A. & LAŠTŮVKA, Z., 2014a.– New records of mining Lepidoptera from the Iberian Peninsula (Insecta: Lepidoptera).– *SHILAP Revista de lepidopterología*, **42**(165): 121-133.
- LAŠTŮVKA, A. & LAŠTŮVKA, Z., 2014b.– A new species of the *Phyllonorycter ulicicolella* group from the Iberian Peninsula (Lepidoptera: Gracillariidae).– *SHILAP Revista de lepidopterología*, **42**(166): 281-285.
- LAŠTŮVKA, A. & LAŠTŮVKA, Z., 2014d.– New records of mining moths from the Iberian Peninsula from 2014 (Insecta: Lepidoptera).– *SHILAP Revista de lepidopterología*, **42**(168): 633-647.
- LAŠTŮVKA, Z. & LAŠTŮVKA, A., 2009.– New records of mining Lepidoptera from the Iberian Peninsula (Lepidoptera: Nepticulidae, Opostegidae, Bucculatricidae, Gracillariidae).– *SHILAP Revista de lepidopterología*, **37**(148): 485-494.
- LAŠTŮVKA, Z. & LAŠTŮVKA, A., 2014c.– Sesiidae of the Iberian Peninsula, new records and distributional analysis (Insecta: Lepidoptera).– *SHILAP Revista de lepidopterología*, **42**(168): 559-580.
- MARABUTO, E. & MARAVALHAS, E., 2008.– Contribuição para o conhecimento dos lepidópteros do Sítio Natura-2000 “Montesinho-Nogueira”, Trás-os-Montes, Portugal (Insecta, Lepidoptera).– *Boletín Sociedad Entomológica Aragonesa*, **43**: 145-151.
- MARABUTO, E., PIRES, P. & CORLEY, M. F. V., 2013.– The Lepidoptera of Parque Natural do Tejo Internacional, Portugal (Insecta: Lepidoptera).– *SHILAP Revista lepidopterologica*, **41**(161): 5-42.
- MENDES, C. DE AZEVEDO, 1903.– Lepidópteros de Portugal. II. Lepidópteros da região de S. Fiel (Beira Baixa).– *Brotéria*, **2**: 41-80.
- MENDES, C. DE AZEVEDO, 1904.– Lepidópteros de Portugal. II. Lepidópteros da região de S. Fiel (Beira Baixa).– *Brotéria*, **3**: 223-254.
- MENDES, C. DE AZEVEDO, 1905.– Lepidópteros de Portugal. II. Lepidópteros da região de S. Fiel (Beira Baixa).– *Brotéria*, **4**: 166-177.
- MENDES, C. DE AZEVEDO, 1910a.– Lepidópteros de Portugal. I. Lepidópteros dos arredores de Torres Vedras. – *Brotéria, Série Zoologia*, **9**: 110-129.
- MENDES, C. DE AZEVEDO, 1910b.– Lepidópteros de Portugal. II. Lepidópteros de Val de Rosal (Caparica de Monte) em 12 e 13 Abril. – *Brotéria, Série Zoologia*, **9**: 129-132.
- MENDES, C. DE AZEVEDO, 1913.– Lepidópteros de S. Fiel (Beira Baixa - Portugal). Supplemento. – *Brotéria, Série Zoologia*, **11**: 15-44.
- MONTEIRO, T., 1957.– Contribuição para o conhecimento dos Lepidópteros de Portugal. II. – *Brotéria, Serie de Ciências Naturais*, **26**(53):175-187.
- MONTEIRO, T., 1962.– Pyralides novos para Portugal. – *Publicações do Instituto de Zoologia Dr. Augusto Nobre*, **87**: 9-21.
- MONTEIRO, T., 1964.– Primeiros Contactos com a Fauna lepidóptérica de Mindelo (Vila do Conde). II. – *Publicações do Instituto de Zoologia Dr. Augusto Nobre*, **90**: 9-27.
- MONTEIRO, T. & CARVALHO, J. PASSOS DE, 1984.– Lepidópteros do Algarve. – *Anais da Faculdade de Ciências de Porto*, **64**: 95-219.
- MONTEIRO, T. & MARAVALHAS, E., 1987.– Lepidópteros novos para Portugal e breves considerações sobre algumas espécies pouco conhecidas. – *Boletim da Sociedade Portuguesa de Entomologia*, **1 III-18**: 16.
- NIEUKERKEN, E. J. VAN, LAŠTŮVKA, A. & LAŠTŮVKA, Z., 2004.– Annotated catalogue of the Nepticulidae and Opostegidae of the Iberian Peninsula (Lepidoptera: Nepticuloidea).– *SHILAP Revista de lepidopterología*, **32**(127): 211-260.

- PIRES, P. & CORLEY, M. F. V., 2007.– The Lepidoptera of Baixo Mondego (Beira Litoral, Portugal) (Insecta: Lepidoptera).– *SHILAP Revista de lepidopterología*, **35** (138): 187-230.
- RAGONOT, E. L., 1881.– Notes on the entomology of Portugal. IV. Lepidoptera (continued). Micro-lepidoptera (except Tineina) collected by the Rev. A. E. Eaton in 1880 with descriptions of new species.– *Entomologist's Monthly Magazine*, **17**: 229-233.
- RIEDL, T., 1990.– Sur quelques Gelechioidea conservés au Musée Zoologique de Copenhague (Lepidoptera) (Partie II).– *Nota lepidopterologica*, **12**: 319-327.
- ROBINSON, G. S., 1979.– Clothes-moths of the *Tinea pellionella* complex: a revision of the world's species (Lepidoptera: Tineidae).– *Bulletin of the British Museum (Natural History). Entomology series*, **38**: 57-128.
- SOBCZYK, T., ARNSCHIED, W.R. & NUSS, M., 2014.– Taxonomische Revision von *Oiketicoides* Heylaerts, 1881 von der Iberischen Halbinsel (Lepidoptera: Psychidae, Oiketicinae).– *Entomologische Zeitschrift*, **124**: 215-226.
- STANTON, H. T., 1881.– Notes on the entomology of Portugal. V. Lepidoptera (continued). Micro-lepidoptera (Tineina) collected by the Rev. A. E. Eaton in 1880.– *Entomologist's Monthly Magazine*, **17**: 246-249.
- TREMATERRA, P., 2014.– *Lobesia arzilae* sp. n. and *Willibaldiana culatrae* sp. n. new species from Portugal (Lepidoptera: Tortricidae: Olethreutinae).– *Journal of Entomological and Acarological Research*, **46**: 66-69.
- TUTIN, T. G., HEYWOOD, V. H., BURGESS, N. A., MOORE, D. M., VALENTINE, D. H., WALTERS, S. M. & WEBB, D. A., 1964-1980.– *Flora Europaea*, **1**: xxxii + 464 pp., **2**: xxvii + 455 pp., **3**: xxix + 370 pp., **4**: xxix + 505 pp., **5**: xxxvi + 452 pp. Cambridge University Press, Cambridge.
- VIEILLEDENT, P., 1905.– Lepidópteros da Região de Setúbal.– *Brotéria*, **4**: 185-206.
- VIVES MORENO, A., 1987.– *La Familia Coleophoridae Hübner, [1825] en la Península Ibérica (Insecta: Coleophoridae)*: 468 pp., 213 pls. Universidad Complutense, Madrid.
- VIVES MORENO, A., 1992.– *Catálogo sistemático y sinónimo de los lepidópteros de la Península Ibérica y Baleares (Insecta: Lepidoptera)*: 378 pp. Ministerio de Agricultura, Peces y Alimentación, Madrid.
- VIVES MORENO, A., 1994.– *Catálogo sistemático y sinónimo de los lepidópteros de la Península Ibérica y Baleares. (Insecta: Lepidoptera) (Segunda Parte)*: 775 pp. Ministerio de Agricultura, Peces y Alimentación, Madrid.
- VIVES MORENO, A., 2014.– *Catálogo sistemático y sinónimo de los Lepidoptera de la Península Ibérica, de Ceuta, de Melilla y de las Islas Azores, Baleares, Canarias, Madeira y Salvajes. (Insecta: Lepidoptera.)*: 1184 pp. Suplemento a SHILAP Revista de lepidopterología, Madrid.
- ZILLI, A. & RACHELI, T., 1989.– Revisional notes on Spanish *Heterogynis* Rambur, 1837 (Lepidoptera, Heterogyniidae).– *Entomologist's Gazette*, **40**: 125-152.

\*M. F. V. C.

Pucketty Farm Cottage, Faringdon  
GB-Oxfordshire SN7 8JP  
GRAN BRETAÑA / GREAT BRITAIN  
E-mail: martin.corley@btinternet.com

y / and

CIBIO, Centro de Investigação em Biodiversidade e Recursos Genéticos  
Universidade do Porto  
Campus Agrário de Vairão  
P-4485-661 Vairão  
PORTUGAL / PORTUGAL

J. R.  
Urbanização Lourisol  
Rua Manuel Cerqueira Nobrega, Lote 16, 2. frente  
P-3105-165 Louriçal, Pombal  
PORTUGAL / PORTUGAL  
E-mail: roseteprof@gmail.com

F. R.  
Rua Bento Menni, nº 12  
P-6300-520 Guarda  
PORTUGAL / PORTUGAL  
E-mail: fromao@sapo.pt



E. M. M.  
FCUL / CBA  
Computational Biology and Population Genomics Group  
Faculdade de Ciências de Lisboa  
Edifício C2, sala 2.3.22  
Campo Grande  
P-1749-016 Lisboa  
PORTUGAL / *PORTUGAL*

y / and

Rua Maestro Frederico de  
Freitas, nº 5, 7º dto.  
P-1500-399 Lisboa  
PORTUGAL / *PORTUGAL*  
E-mail: eduardo.marabuto@gmail.com

E. M.  
Tagis - Centro de Conservação das Borboletas de Portugal,  
Rua da Escola Politécnica, 58  
P-1250-102 Lisboa  
PORTUGAL / *PORTUGAL*  
E-mail: emsmaravalhas@gmail.com

M. J. D.  
Lynwode House  
Linley Road, Talke  
GB-Stoke-on-Trent ST7 1TZ  
GRAN BRETAÑA / *GREAT BRITAIN*  
E-mail: mike.dale@btinternet.com

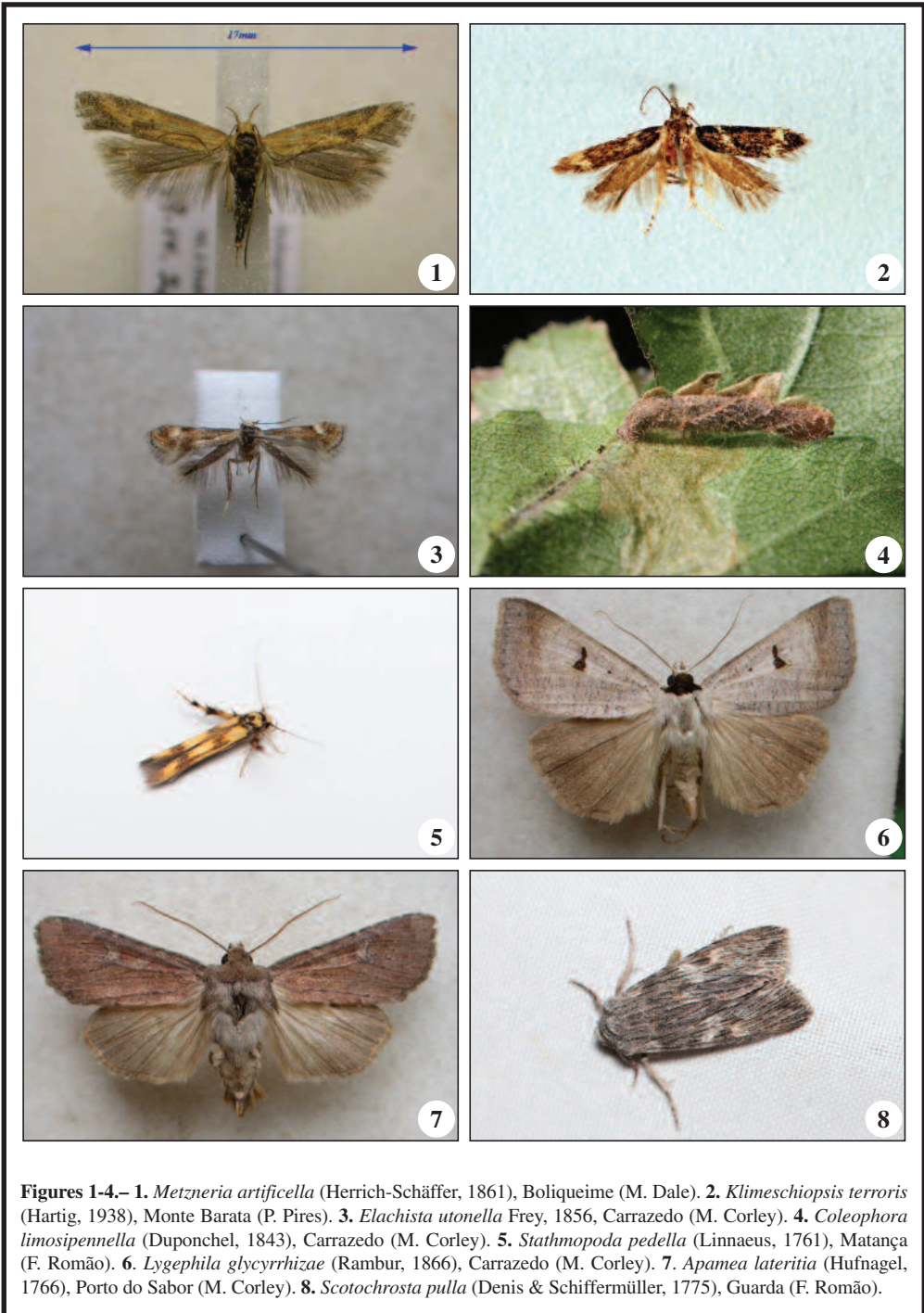
P. P.  
Apartment 9  
12 Gwynne Rd  
GB-London SW11 3GJ  
GRAN BRETAÑA / *GREAT BRITAIN*  
E-mail: pedromspires@gmail.com

\*Autor para la correspondencia / *Corresponding author*

(Recibido para publicación / *Received for publication* 16-VIII-2015)

(Revisado y aceptado / *Revised and accepted* 30-IX-2015)

(Publicado / *Published* 30-XII-2015)



**Figures 1-4.**– 1. *Metzneria artificella* (Herrich-Schäffer, 1861), Boliqueime (M. Dale). 2. *Klimeschiopsis terroris* (Hartig, 1938), Monte Barata (P. Pires). 3. *Elachista utonella* Frey, 1856, Carrazedo (M. Corley). 4. *Coleophora limosipennella* (Duponchel, 1843), Carrazedo (M. Corley). 5. *Stathmopoda pedella* (Linnaeus, 1761), Matança (F. Romão). 6. *Lygephila glycyrrhizae* (Rambur, 1866), Carrazedo (M. Corley). 7. *Apamea lateritia* (Hufnagel, 1766), Porto do Sabor (M. Corley). 8. *Scotochrosta pulla* (Denis & Schiffermüller, 1775), Guarda (F. Romão).